

THIS SUPPLEMENT CONTAINS IMPORTANT INFORMATION ABOUT ASHBURTON MANAGEMENT COMPANY (RF) PROPRIETARY LIMITED ("ASHBURTON MANCO") AND THE ASHBURTON WORLD GOVERNMENT BOND EXCHANGE TRADED FUND ("ASHBURTON WORLD GOVERNMENT BOND ETF") AND SHOULD BE READ CAREFULLY BEFORE INVESTING. IF YOU HAVE ANY QUESTIONS ABOUT THE CONTENTS OF THE ASHBURTON ETF PROGRAMME OR THIS SUPPLEMENT, YOU SHOULD CONSULT YOUR PROFESSIONAL ADVISOR.

The directors of Ashburton Manco, whose names are set out on the inside cover of this supplement, collectively and individually, accept full responsibility for the accuracy of the information contained in this supplement (as read together with the Ashburton ETF Programme Memorandum) and certify that, to the best of their knowledge and belief, no facts have been omitted the omission of which would make any statement herein false or misleading, that they have made all reasonable enquiries to ascertain such facts and that this supplement contains all information required by law and the JSE Listings Requirements. The issuer shall accept full responsibility for the accuracy of the information contained in the supplement.

If a prospective investor is in any way unclear as to the correct procedure to be followed or the terms and conditions applicable to subscriptions for the securities referred to herein, the investor is advised to contact his JSE broker or professional advisor. It is also advised that investors must seek their own independent tax advice.



5th SUPPLEMENT

to the

ETF PROGRAMME MEMORANDUM

Originally issued on 2 October 2008

Amended on 15 August 2012

Further amended on 22 February 2016

in respect of

the Ashburton Collective Investment Scheme in Securities
registered in terms of the Collective Investment Schemes Control Act, No. 45 of 2002

being an

ASHBURTON WORLD GOVERNMENT BOND EXCHANGE TRADED FUND

Application has been made to and granted by the JSE for the listing of The Ashburton World Government Bond Exchange Traded Fund ("Ashburton World Government Bond ETF") under the abbreviated name ("ASHGLOBND") in the "Exchange Traded Funds" sector on the JSE.

Abbreviated name: "ASHGLOBND"

Share code: "ASHWGB"

ISIN: ZAE000254413

A copy of this supplement in the English language only is available at the registered office of Ashburton Manco.

Prospective purchasers of any Exchange Traded Funds should ensure that they fully understand the nature of the Exchange Traded Fund, the possible Exchange Control implications and the extent of their exposure to risks, and that they consider the suitability of the Exchange Traded Fund as an investment in light of their own circumstances and financial position. The JSE's approval of the listing of the Ashburton World Government Bond ETF is not to be taken in any way as an indication of the merits of an ETF or of the Ashburton World Government Bond ETF securities. The JSE has not verified the accuracy and truth of the contents of the documentation and, to the extent permitted by law, will not be liable for any claim of whatever kind. Claims against the JSE Guarantee Fund may only be made in respect of trading in Ashburton World Government Bond ETF securities on the JSE and in accordance with the terms of the rules of the Guarantee Fund and can in no way relate to a default by the issuer of its obligations in terms of the issue of Ashburton World Government Bond ETF securities. The JSE takes no responsibility for the contents of any listing documentation (including this supplement) or the financial statements of Ashburton Manco, and makes no representation as to the accuracy or completeness of any of the foregoing documents and expressly disclaims any liability for any loss arising from or in reliance upon the whole or any part of the listing documentation or annual financial statements (as amended or restated from time to time).

A handwritten signature in black ink, appearing to be "vw.", is located in the bottom right corner of the page.

Originator



Sponsor



Date of issue: 8 February 2018

AVN

CORPORATE INFORMATION

<p>Originator Ashburton Management Company (RF) Proprietary Limited (Registration number 1996/002547/07) 1 Merchant Place Cnr Fredman Drive & Rivonia Road Sandton 2196 P.O Box 786273, Sandton, 2146</p>	<p>Sponsor Bridge Capital Advisors Proprietary Limited (Registration number 1998/016301/07) 2nd Floor 27 Fricker Road Illovo Boulevard, Illovo 2196 P.O Box 651010, Benmore 2010</p>
<p>Manager Ashburton Management Company (RF) Proprietary Limited (Registration number 1996/002547/07) 1 Merchant Place Cnr Fredman Drive & Rivonia Road Sandton 2196 P.O Box 786273, Sandton, 2146</p>	<p>Auditors PricewaterhouseCoopers Inc (Registration number 1998/012055/21) 2 Eglin Road Sunninghill 2157 Private Bag x 36, Sunninghill, 2157</p>
<p>Independent Fiduciary Agent, Issuer CSDP & Authorised dealer Standard Chartered Bank, Johannesburg Branch (Registration number 2003/020177/10) 4 Sandown Valley Crescent, Sandton, 2196 P.O. Box 782080, Sandton 2146</p>	<p>Bankers FirstRand Bank Limited, 1 Merchant Place Cnr Fredman Drive & Rivonia Road Sandton 2196 P.O Box 786273, Sandton, 2146</p>
<p>Company Secretary of the Manager Carnita Low 4 Merchant Place Cnr Fredman Drive & Rivonia Road Sandton 2196 P.O Box 786273, Sandton, 2146</p>	
<p>Directors of Ashburton Management Company (RF) Proprietary Limited Stuart Yates* Boshoff Grobler Marilyn Ramplin* Geoffrey Llewellyn Carter* Vladimir Nedeljkovic * Non-executive</p>	

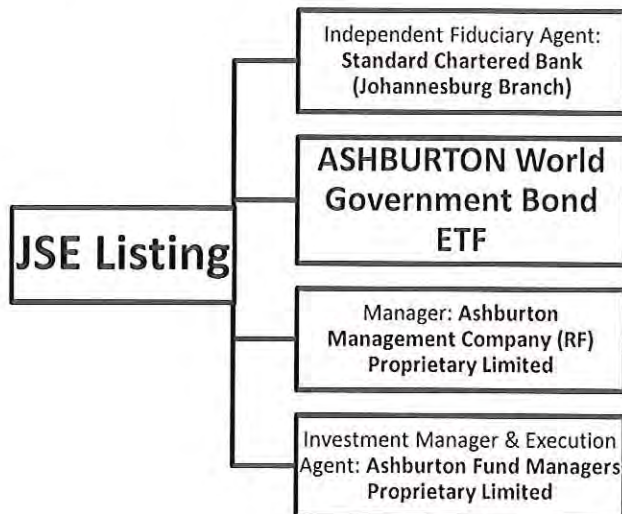
SUPPLEMENT IN RESPECT OF THE ETF PROGRAMME MEMORANDUM TO SUBSCRIBE FOR SECURITIES IN THE ASHBURTON WORLD GOVERNMENT BOND ETF PORTFOLIO OF THE ASHBURTON COLLECTIVE INVESTMENT SCHEME

1. SALIENT DATES AND TIMES

	2018
Announcement of listing approval on SENS	Thursday, 08 February
Opening date of the initial offer at 09:00 on	Friday, 09 February
Closing Date of the initial offer at 12:00 on	Monday, 05 March
Ramp up period in respect of cash subscriptions commences	Wednesday, 07 March
Letters of Allocation ("LA") issued	Friday, 09 March
Ramp up period in respect of cash subscriptions ends	Friday, 09 March
Publication of announcement on SENS as to the results of the initial offer and the conversion ratios	Monday, 12 March
Listing date at 09:00 on	Tuesday, 13 March

2. STRUCTURE

The Ashburton World Government Bond ETF is managed by Ashburton Manco ("the Manager"). The Manager is an approved manager of Collective Investment Schemes and as such is governed in terms of the Collective Investment Schemes Control Act, 2002. The Manager has entered into an agreement with the Investment Manager, Ashburton Fund Managers Proprietary Limited ("AFM"), in terms of which AFM will monitor changes to the index constituents and execute transactions to reflect these changes on behalf of the Manager. Standard Chartered Bank (Johannesburg Branch) will act as the Independent Fiduciary Agent; their role will encompass, *inter alia*, the protection of investors' interests, by fulfilling a fiduciary role.



UN

3. GENERAL (please note: the Investment Manager is Ashburton Fund Managers and execution agent is Ashburton Fund Managers)

- 3.1. The contents of this supplement form part of the Ashburton ETF Programme Memorandum originally issued on 2 October 2008, amended on 15 August 2012 and further amended on 22 February 2016. The contents of the Ashburton ETF Programme Memorandum will apply to the issue and listing of the securities described herein and will be supplemented by the contents of this supplement. In the event of any conflict between the contents of this supplement and the contents of the Ashburton ETF Programme Memorandum, the contents of this supplement will prevail. It should be noted that this is not an initial public offering.
- 3.2. This supplement sets out the salient terms in respect of the listing of the Ashburton World Government Bond ETF.
- 3.3. Ashburton World Government Bond ETF securities are not in any way sponsored, endorsed, sold or promoted by FTSE Russell ("FTSE") and FTSE does not make any warranty or representation whatsoever, expressly or implied, either as to the results to be obtained from the use of the Index and/or the figure at which the Index stands at any particular day or otherwise. The Index is compiled and calculated by FTSE Russell. However, neither FTSE shall be liable (whether in negligence or otherwise) to any person for any error in the Index and FTSE shall not be under any obligation to advise any person of any error therein. Where applicable, the issuer will advise the market via the JSE SENS system of any errors within the index.
- 3.4. There are no preferential conversion and/or exchange rights attached to Ashburton World Government Bond ETF securities.
- 3.5. No director of Ashburton Manco has any personal interest in any transaction entered into by Ashburton Manco.
- 3.6. There are no options or preferential rights attached to Ashburton World Government Bond ETF securities.
- 3.7. There are no amounts paid or payable to any promoter in respect of Ashburton World Government Bond ETF securities.
- 3.8. Any change in the terms of the securities must be approved by extraordinary resolution, excluding the votes of the issuer, any guarantor and their associates.
- 3.9. There are no legal or arbitration proceedings, including any proceedings that are pending or threatened of which the Manager is aware that may have or have in the recent past, being at least the previous 12 months, a material effect on the financial position of the Manager.

4. SUMMARY OF THE OFFERING

4.1. Issuer/Portfolio	Ashburton World Government Bond ETF, a portfolio in the Ashburton Collective Investment Scheme in securities, registered in terms of the Collective Investment Schemes Control Act, No 45 of 2002
4.2. ISIN	ZAE000254413
4.3. Share code	ASHWGB
4.4. Abbreviated name	ASHGLOBND
4.5. Securities to be listed	Ashburton World Government Bond ETF Securities to the value of approximately [R90 million] will be listed on the Listings date. A minimum amount of 1 000 000 securities is to be listed at an approximate price of R 6.67 per security.
4.6. Index	Citi World Government Bond Index ("WGBI" or "the Index")
4.7. Description of participatory interests	Ashburton World Government Bond ETF securities
4.8. Distribution or accounting period	The portfolio will make distributions quarterly, being at the end of January, April, July and October.
4.9. Any other special conditions and modifications to the terms and conditions set out in the Ashburton ETF Programme Memorandum dated 2 October 2008, amended on 15 August 2012 and further amended on 22 February 2016	N/A
4.10. Investment policy	Refer to Annexure 1
4.11. Management and other fees	Refer to Annexure 2
4.12. Historical performance of the Index	Refer to Annexure 3
4.13. Subscription conditions and procedures	Refer to Annexure 4
4.14. Exchange control consequences	Refer to Annexure 5
4.15. Composition of the Index as at 31 July 2017	Refer to Annexure 6
4.16. Preliminary expenses	Refer to Annexure 7
4.17. Business addresses of the directors	Refer to Annexure 8

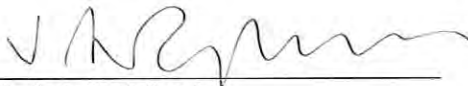


SIGNED AT JOHANNESBURG BY:



Alessandro Scalco

And



Vladimir Nedeljkovic

ON BEHALF OF ALL THE DIRECTORS OF ASHBURTON MANAGEMENT COMPANY (RF)
PROPRIETARY LIMITED AT SANDTON ON 7 February 2018.



ANNEXURE 1

INVESTMENT POLICY

- The objective of the portfolio is to track the economic performance of the underlying index, the WGBI, as closely as possible and to focus on achieving a total compound annual return which will substantially equate to the compound annual return of the portfolio benchmark, as adjusted to take into account transaction and other costs and assets in liquid form.
- The portfolio will be passively managed in that the Manager will not buy and sell securities based on economic, financial and/or market analysis but rather, will buy and sell securities solely for the purpose of ensuring that the portfolio tracks the WGBI.
- As such the investment objective and style of the portfolio will be to generally invest in all of the component securities of the WGBI in proportion to their weighting in the index and will under normal circumstances aim to invest at least 90% of its total assets in the securities composing the WGBI.
- The portfolio may from time to time invest in listed and unlisted financial instruments, in accordance with the provisions of the Act, and the Regulations thereto, as amended from time to time, in order to achieve the portfolio's investment objective. The Manager may also include forward currency, interest rate and exchange rate swap transactions for efficient portfolio management purposes.
- The financial or other condition of any company or entity included from time to time in the WGBI will not result in the elimination of its securities from the portfolio, unless the securities of such company or entity are removed from the WGBI itself. The discontinuance of the WGBI will imply discontinuance and/or modification of the fund. This will be subject to the necessary regulatory approvals and due processes.
- In no event will the portfolio be managed according to the traditional approach of active management, rather a passive approach will be applied at all times.
- Nothing in the supplemental deed shall preclude the Manager from varying the ratios of securities, non-equity securities or assets in liquid form in changing economic environment or market conditions, or to meet the requirements in terms of legislation and from retaining cash or placing cash on deposit in terms of the main deed and the supplemental deed.
- The trustee shall ensure that the investment policy set out in the supplemental deed is carried out.
- For the purpose of this portfolio, the Manager shall reserve the right to close the portfolio to new investors on a date determined by the Manager. This will be done in order to be able to manage the portfolio in accordance with its mandate. The Manager may, once a portfolio has been closed, open that portfolio

again to new investors on a date determined by the Manager.

- Any change in the investment policy of the portfolio shall constitute an amendment of the supplemental deed, in which event investors shall be given reasonable notice to enable them to redeem their participatory interests prior to implementation of the change and will be subject to the necessary regulatory approvals and due processes.

Handwritten signature or initials, possibly "D.V.N.", located in the bottom right corner of the page.

ANNEXURE 2

MANAGEMENT AND OTHER FEES

1. Initial costs paid directly by the investor

All taxes, duties, transaction, custody charges and brokerage fees will be for the investor's account.

2. Ongoing fees paid by the Ashburton World Government Bond ETF portfolio

- Ongoing fees include audit fees (approximately R70,000 per annum), bank charges, custodian fees, management fees, scrip-lending agency fees, trustee fees and any other permissible portfolio deductions under Section 93 of the Collective Investment Scheme Control Act. These fees will be included in the Total Expense Ratio for the Ashburton World Government Bond ETF, as published in accordance with industry standards.
- Transaction fees charged on the acquisition/disposal of underlying constituents of the WGBI during the initial offer, rebalancing, corporate action events and creations/redemptions are also charged to the Ashburton World Government Bond ETF portfolio when incurred and are published in accordance with industry standards.
- A management fee of 0.35% per annum (exclusive of VAT), is payable to the Manager.
- The Manager must give not less than three months' written notice to investors of any change in the manager's fee which increases the Managers fee from those detailed above, or any change in the method of calculation thereof that could result in a change in fees.
- In addition, the Manager is entitled to charge a Creation Fee or an exit fee in connection with the expenditure incurred and administration performed by it in respect of the creation, issue and sale or repurchase of Participatory Interests. Such fees would be a maximum of 0.50% (50 basis points) of the consideration received from an investor (unless investors are advised to the contrary). The Manager may at any time in its discretion waive or rebate the upfront fee and/or exit fee (or any portion thereof), in respect of all investors, any category of investor or any particular investor.
- Furthermore, the Manager is responsible for settlement and not the JSE nor any other exchange.



ANNEXURE 3

HISTORICAL PERFORMANCE OF THE INDEX

The performance of the WGBI for the period ending November 2017 is graphed below. Please note that past performance is not indicative of future performance.



Handwritten signature
VN

ANNEXURE 4

SUBSCRIPTION CONDITIONS AND PROCEDURES

The subscription conditions and procedures set out below are applicable both to the initial offer and any subsequent subscriptions (other than secondary market trades) thereafter. **In addition to the information contained herein, additional information is contained in the Ashburton ETF Programme Memorandum and accordingly these two documents should be read together, where applicable.**

1. CONDITIONS OF THE INITIAL OFFER

- Once submitted, an application is irrevocable.
- All subscriptions for Ashburton exchange traded securities will be treated as primary market acquisitions and no application forms are required.
- All subscribers to Ashburton exchange traded securities must have a valid account with a broking member of the JSE and must either be a controlled or a non-controlled client. Subscribers that do not have an account with a JSE member can contact any broker registered on the JSE to open an account. A list is available on the JSE website at www.jse.co.za.

2. THE ISSUE PRICE OF AN ASHBURTON EXCHANGE TRADED SECURITY

The issue price of each Ashburton exchange traded security will be the cost (which includes any costs of trading that the investor may incur) of acquiring the underlying portfolio less any applicable costs, divided by the number of securities.

3. SUBSCRIPTIONS AND REDEMPTIONS AFTER THE INITIAL OFFER

You must contact the Manager, the contact details of which are set out on the inside front cover of this supplement.

4. MAXIMUM SUBSCRIPTIONS

Given that the portfolio is not a close-ended fund, there is no upper limit on the number of securities available for purchase unless specifically indicated in the relevant supplement.



5. SUBSCRIPTIONS

Your payment may only be made in South African currency (Rand).

A cash subscription under the initial offer will be based upon the amount which an applicant applies to invest in Ashburton exchange traded securities rather than a function of how many Ashburton exchange traded securities an applicant wishes to acquire in terms of the subscription. The cash subscription price and the number of Ashburton exchange traded securities to be issued to an applicant for cash will be determined by the amount which the applicant invests (net of the transaction costs and applying the specified exchange rate) of the *pro rata* cost to the fund of acquiring the underlying basket.

Following the close of the initial offer there shall be a Ramp Up Period during which the fund will acquire the appropriate underlying baskets of Securities (comprising the Index) utilising the cash raised during the initial offer.

After the Ramp Up Period, the Manager shall publicly announce the number of Ashburton exchange traded securities allotted and issued per the LAs together with details of the basis on which Ashburton exchange traded securities were allocated under the initial offer. Investors should be aware that transaction costs will be deducted from the subscription amount accompanying their applications, and accordingly, the relevant subscription amount (less transaction costs) shall be invested in Ashburton exchange traded securities. The LAs will then be converted into Ashburton exchange traded securities in accordance with the published conversion ratio. Although the basis of allocation will be publicly announced on the trading day following the end of the Ramp Up Period, applicants will only be informed of their actual individual allocations on receipt of their statements from their broker or CSDP. Accordingly applicants who deal prior to the receipt of their statements do so at the risk of selling Ashburton exchange traded securities in respect of which they have not received confirmation of an allocation.

All taxes, duties, custody charges, brokerage fees, JSE Insider Trading fees and any other costs and expenses will be for your own account.

Ashburton exchange traded securities will be issued to successful applicants and will be booked to applicants' relevant Securities accounts in the books of their broker or CSDP on the listing date, provided that the aforesaid requirements have been fulfilled and the minimum investment criteria have been met.

Neither Ashburton Manco, AFM, the Independent Fiduciary Agent nor the JSE Limited will accept responsibility for any payment made, LA or statement that is lost or stolen in the post.



Calculation of Net Asset Value

The NAV of portfolio will be expressed in Rand. The approximate net asset value on initial launch date per Ashburton World Government Bond ETF will equate to the index level after applying a divisor of 100.

The NAV of the portfolio is calculated by deducting all permissible deductions from the value of the assets held by the Fund (which is determined with reference to the market value of the underlying Securities, which take into account both income received by the fund and amounts which investors must pay the Manager on the creation of new Securities to afford them equal participation in the income which has accrued in the portfolio).

The NAV per security is calculated by dividing the NAV of the portfolio by the number of securities in issue at the time of the calculation. This information is determined at close of trade on each business day. The NAV will be published on the website daily.

Procedures

Investors must give their broker or CSDP instructions that they wish to subscribe for Ashburton exchange traded securities. Such an instruction is akin to an instruction to purchase on the market, is irrevocable and is binding on the client and the broker or CSDP.

The procedures for subscriptions, which will be in accordance with Strate's requirements, will be available from the Manager, contact details of which are set out on the inside front cover.

Material changes

The board of directors of the Manager after due and careful enquiry and consideration, carried out without the involvement of its auditors, is satisfied that there has been no material change in the financial or trading position of Ashburton Manco since the date of its last audited financial statements.

Handwritten signature or initials, possibly 'JN', in the bottom right corner of the page.

ANNEXURE 5

EXCHANGE CONTROL CONSEQUENCES

The comments below are intended as a general guide to the current position under the Exchange Control Regulations, 1961 as promulgated under the Currency and Exchanges Act, 1933, as amended, (the "Regulations") and are not a comprehensive statement of the Regulations. The information below is not intended as advice and it does not purport to describe all of the considerations that may be relevant to a prospective subscriber for, or purchaser of any the Ashburton World Government Bond ETF securities. Prospective subscribers for, or purchasers of any Ashburton World Government Bond ETF securities who are non-South African residents or who are emigrants from the Common Monetary Area are urged to seek further professional advice in regard to the subscription for, or purchase of any Notes.

Individuals, Corporate Entities and Trusts

South African individuals, corporate entities and trusts are permitted to acquire Ashburton World Government Bond ETF securities without any effect on their foreign permissible investment allowance.

Institutional investors and Authorized Dealers

Institutional investors and Authorized Dealers are eligible for certain allowances and are permitted to invest in Ashburton World Government Bond ETF securities within the limits of these allowances. Such investors may have additional reporting and compliance requirements and should consult with their professional advisors or contact the Exchange Control Department.

Blocked Rand

Blocked Rand may be used for the subscription for or purchase of Ashburton World Government Bond ETF securities. Any amounts payable by the Issuer in respect of the Ashburton World Government Bond ETF securities subscribed for or purchased with Blocked Rand may not, in terms of the Regulations, be remitted out of South Africa or paid into any non-South African bank account. For the purposes of this clause, "Blocked Rand" are defined as funds which may not be remitted out of South Africa or paid into a non-South African resident's bank account. The relevant legislation relating to Blocked Rand is the Regulations promulgated under the Currency and Exchanges Act, 1933, as amended.



Emigrants from the Common Monetary Area

In the event that an Ashburton World Government Bond ETF securities is held by an emigrant from the Common Monetary Area, the securities account of such emigrant will be designated as an "emigrant" account in the records of the emigrant's custodian/broker.

Any payments of interest and/or principal due from an Ashburton World Government Bond ETF security to an emigrant will be deposited into such emigrant's Blocked Rand account, as maintained by an authorised foreign exchange dealer. The amounts are not freely transferable from the Common Monetary Area and may only be dealt with in terms of the Regulations.

Non-residents of the Common Monetary Area

In the event that an Ashburton World Government Bond ETF securities is held by a non-resident of the Common Monetary Area, the securities account of such non-resident will be designated as a "non-resident" account in the records of the non-residents custodian/broker.

It will be incumbent on any such non-resident to instruct the non-resident's nominated or authorised dealer in foreign exchange as to how any funds due to such non-resident in respect of Ashburton World Government Bond ETF securities are to be dealt with. Such funds may, in terms of the Regulations, be remitted abroad only if the relevant Notes are acquired with foreign currency introduced into South Africa and provided that the relevant account is designated "non-resident" in the records of the custodian/broker.

For the purposes of these paragraphs, the Common Monetary Area comprises South Africa, the Republic of Namibia, the Kingdom of Lesotho and the Kingdom of Swaziland.



ANNEXURE 6

COMPOSITION OF THE INDEX AS AT 01 November 2017

The WGBI is designed to measure the performance of the global sovereign fixed income market.

The WGBI is a market capitalisation weighted index that measures the performance of fixed-rate, local currency, investment-grade sovereign bonds. The WGBI is a widely used benchmark that currently comprises sovereign debt from over 20 countries, denominated in a variety of currencies, and has more than 30 years of history available. The WGBI is a broad benchmark providing exposure to the global sovereign fixed income market. The WGBI is rebalanced once a month at the the end of every month, with a daily calculation frequency.

1. Constituents and weightings of the underlying portfolio:

Further information on the underlying fund can be obtained directly from the following website:

<http://www.ashburtoninvestments.com>

The following information will be published on each business day on the Ashburton World Government Bond ETF website:

- the NAV of the Ashburton World Government Bond ETF showing the fair value based on the index level from the preceding day;
- the actual funds available for distribution to holders of Ashburton World Government Bond ETF securities;
- the index level for the preceding day;
- the accrued costs incurred in the ETF; and
- cash portion for creations and redemptions, if applicable.

2. Composition of the Index

The index level of the preceding business day will be made available daily on <http://www.ashburtoninvestments.com>. For more information on the index visit <https://www.yieldbook.com/m/indices/single.shtml?ticker=WGBI>



Index
Citi World Government Bond Index ZAR
Citi World Government Bond Index USD

Index Level
667.3967
946.8411

Bond	SEDOL	Par Amount (USD)	Market Capital (USD)	Index Weight
AUSTRALIA GOVT BND	B7VDJ5	29,799.00	26,749.47	0.13%
AUSTRALIA GOVT BND	B0WRQ0	20,551.48	16,942.49	0.08%
AUSTRALIA GOVT BND	B4KTTW	27,996.72	23,745.91	0.11%
ITALY GOVT BTP	519303	10,423.13	18,152.50	0.09%
ITALY GOVT BTP	536782	26,763.13	45,073.76	0.21%
ITALY GOVT BTP	557437	28,148.50	44,029.12	0.21%
BELGIUM GOVT OLO #31	B8CJ05	19,344.94	34,634.10	0.16%
GERMANY GOVT BUND	439074	10,250.00	17,494.45	0.08%
GERMANY GOVT BUND	528660	11,250.00	21,312.47	0.10%
GERMANY GOVT BUND	540158	14,500.00	26,771.11	0.13%
GERMANY GOVT BUND	555165	11,250.00	19,361.87	0.09%
GERMANY GOVT BUND	B1P8H1	14,000.00	27,032.45	0.13%
GERMANY GOVT BUND	B3BXJ6	16,000.00	33,216.36	0.16%
GERMANY GOVT BUND	B4XF7K	24,000.00	30,738.05	0.15%
ITALY GOVT BTP	733531	18,761.00	31,032.98	0.15%
GERMANY GOVT BUND	B59K69	22,000.00	28,966.52	0.14%
ITALY GOVT BTP	B415B8	22,152.36	34,054.64	0.16%
ITALY GOVT BTP	762605	24,093.27	30,394.55	0.14%
ITALY GOVT BTP	B00H21	23,409.65	30,796.32	0.15%
SPAIN GOVT OBLIGAC	B3Q6L7	17,564.70	26,663.79	0.13%
BELGIUM GOVT OLO #44	B86SXX	19,634.69	37,556.99	0.18%
BELGIUM GOVT OLO #58	B60H7R	19,486.00	25,985.94	0.12%
ITALY GOVT BTP	B0MDVB	27,220.80	37,728.39	0.18%
BELGIUM GOVT OLO #48	B15C9P	14,084.00	20,219.53	0.10%
BELGIUM GOVT OLO #55	B3L3GJ	12,237.00	15,751.70	0.07%
ITALY GOVT BTP	B3FBCW	24,149.23	30,570.80	0.14%
ITALY GOVT BTP	B3ZYK7	24,758.35	31,837.44	0.15%
ITALY GOVT BTP	B66W7L	24,718.67	36,195.00	0.17%
ITALY GOVT BTP	B4SGFV	24,330.81	31,819.62	0.15%
GERMANY GOVT BUND	588050	9,250.00	18,731.01	0.09%
GERMANY GOVT BUND	464491	17,000.00	33,195.36	0.16%
GERMANY GOVT BUND	754050	20,000.00	38,233.11	0.18%

GERMANY GOVT BUND	B05Q87	23,000.00	42,437.85	0.20%
CANADA GOVT BND	B8FF1Z	14,200.00	11,197.56	0.05%
CANADA GOVT BND	BBTRTM	13,800.00	11,516.61	0.05%
CANADA GOVT BND	BH4H32	10,200.00	8,201.01	0.04%
CANADA GOVT BND	BLRLTS	16,700.00	13,426.69	0.06%
CANADA GOVT BND	BM7RZV	4,250.00	3,703.35	0.02%
CANADA GOVT BND	BY8L4R	14,500.00	12,337.34	0.06%
CANADA GOVT BND	BNM8NP	13,100.00	10,726.13	0.05%
CANADA GOVT BND	BRJG7P	23,200.00	18,548.31	0.09%
CANADA GOVT BND	BWVY6K	26,000.00	20,305.41	0.10%
CANADA GOVT BND	BYSGCN	13,500.00	10,352.04	0.05%
CANADA GOVT BND	BYZR3D	13,800.00	10,715.40	0.05%
CANADA GOVT BND	BYZF6H	15,000.00	11,583.23	0.05%
CANADA GOVT BND	BD454Q	15,000.00	10,858.14	0.05%
CANADA GOVT BND	BZCN2Y	13,291.03	10,544.09	0.05%
CANADA GOVT BND	BYWYKB	15,000.00	11,372.82	0.05%
CANADA GOVT BND	BYW3NK	15,600.00	12,327.37	0.06%
CANADA GOVT BND	BF0BCV	15,600.00	12,368.75	0.06%
CANADA GOVT BND	BD4601	15,600.00	12,034.38	0.06%
CANADA GOVT BND	BYTP8M	15,600.00	12,314.26	0.06%
CANADA GOVT BND	BDFBJQ	3,000.00	2,364.98	0.01%
CANADA GOVT BND	NA	11,700.00	9,313.77	0.04%
CANADA GOVT BND	219108	4,035.98	4,965.44	0.02%
CANADA GOVT BND	214557	10,903.38	12,018.31	0.06%
CANADA GOVT BND	270314	12,432.91	14,545.77	0.07%
CANADA GOVT BND	B0225F	13,259.71	14,976.08	0.07%
CANADA GOVT BND	B39VLH	15,361.34	15,710.90	0.07%
CANADA GOVT BND	B3DLWM	17,650.00	14,803.62	0.07%
CANADA GOVT BND	B403J2	13,100.00	11,119.97	0.05%
CANADA GOVT BND	B4PM5Y	11,500.00	9,810.94	0.05%
CANADA GOVT BND	B6R2TV	16,400.00	15,854.43	0.07%
CANADA GOVT BND	B4888C	12,700.00	10,708.43	0.05%
DENMARK GOVT	B3FNDZ	128,405.00	35,070.92	0.17%
GERMANY GOVT BUND	B3FKPQ	24,000.00	30,782.70	0.15%
FRANCE GOVT OAT	B8BXL2	27,608.93	49,084.59	0.23%
FRANCE GOVT OAT	B2PHZ5	29,091.88	52,522.32	0.25%
FRANCE GOVT OAT	B2PHXF	10,606.20	18,976.42	0.09%
FINLAND GOVT BND	B2R3C9	5,000.00	6,498.69	0.03%
FINLAND GOVT BND	B54644	6,001.00	9,186.97	0.04%
FRANCE GOVT OAT	B1XC36	44,918.00	68,774.02	0.33%

FRANCE GOVT OAT	B3F27F	28,207.00	36,395.14	0.17%
FRANCE GOVT OAT	B3Q54H	35,225.00	46,845.10	0.22%
FRANCE GOVT OAT	B78S55	31,028.00	40,150.15	0.19%
FRANCE GOVT OAT	B08HF8	39,352.00	54,177.25	0.26%
FRANCE GOVT OAT	B2PHRY	26,678.00	49,187.86	0.23%
FRANCE GOVT OAT	B613PS	32,780.00	61,791.65	0.29%
FRANCE GOVT OAT	B06BX6	14,926.00	27,885.30	0.13%
FRANCE GOVT OAT	B2PHTV	26,534.00	46,893.09	0.22%
IRELAND GOVT BND	B837RB	10,926.16	14,812.62	0.07%
UNITED KINGDOM AND NORTHERN IRELAND GOVERNMENT GOVT GILTTSY	B77JZ5	18,915.77	38,751.85	0.18%
UNITED KINGDOM AND NORTHERN IRELAND GOVERNMENT GOVT GILTTSY	B81VHD	18,541.23	26,390.83	0.12%
UNITED KINGDOM AND NORTHERN IRELAND GOVERNMENT GOVT GILTTSY	B84V8S	14,469.13	27,576.82	0.13%
UNITED KINGDOM AND NORTHERN IRELAND GOVERNMENT GOVT GILTTSY	B77CTW	15,204.97	21,753.94	0.10%
UNITED KINGDOM AND NORTHERN IRELAND GOVERNMENT GOVT GILTTSY	B88D4B	21,257.93	39,951.72	0.19%
UNITED KINGDOM AND NORTHERN IRELAND GOVERNMENT GOVT GILTTSY	B78RB9	13,393.40	25,019.76	0.12%
UNITED KINGDOM AND NORTHERN IRELAND GOVERNMENT GOVT GILTTSY	B7PG6P	13,000.69	20,023.47	0.09%
FRANCE GOVT OAT	B2PHX9	8,844.39	13,258.09	0.06%
MALAYSIA GOVT BND	B1YBKV	6,000.00	1,367.21	0.01%
MALAYSIA GOVT BND	B3D4K8	5,040.00	1,299.45	0.01%
ITALY GOVT BTP	593330	29,762.75	50,128.80	0.24%
MEXICO GOVT BONO	B00L4V	90,095.90	5,400.22	0.03%
MEXICO GOVT BONO	B1GCCF	81,070.25	5,917.88	0.03%
MEXICO GOVT BONO	B05QN1	258,710.19	17,310.51	0.08%
MEXICO GOVT BONO	B1QGYR	130,929.79	7,698.57	0.04%
MEXICO GOVT BONO	B44NND	92,136.55	5,928.79	0.03%
MEXICO GOVT BONO	B3RS0	205,774.75	11,815.63	0.06%
MEXICO GOVT BONO	B4XH54	99,497.26	6,299.29	0.03%
DENMARK GOVT	B4WWL2	83,830.00	15,091.46	0.07%
SPAIN GOVT OBLIGAC	B2PHT4	19,750.60	30,482.36	0.14%
SPAIN GOVT OBLIGAC	B1YXPP	16,024.33	26,629.87	0.13%
MALAYSIA GOVT BND	B05KP8	7,315.55	1,824.79	0.01%
NORWAY GOVT BND	B39J5Q	84,000.00	11,398.25	0.05%
NETHERLANDS GOVT DSL	428338	8,241.49	14,231.13	0.07%
NETHERLANDS GOVT DSL	542856	13,028.81	23,662.14	0.11%
MALAYSIA GOVT BND	B54ZQ0	17,119.00	4,202.42	0.02%
NETHERLANDS GOVT DSL	B07NKK	14,848.43	27,250.69	0.13%
NETHERLANDS GOVT DSL	B101L0	4,263.00	6,225.25	0.03%
NETHERLANDS GOVT DSL	B4YDZT	14,671.40	18,952.86	0.09%

POLAND GOVT BND	744194	22,529.06	7,049.41	0.03%
POLAND GOVT BND	B3DXQM	18,701.08	5,779.42	0.03%
AUSTRIA GOVT BUND	529363	8,699.53	16,067.76	0.08%
ITALY GOVT BTP	452049	12,226.16	21,585.44	0.10%
ITALY GOVT BTP	768361	25,110.92	38,873.91	0.18%
ITALY GOVT BTP	B0XPJ5	28,148.32	37,697.95	0.18%
ITALY GOVT BTP	B8HR1J	20,520.27	32,002.60	0.15%
POLAND GOVT BND	B3DZR1	8,529.34	2,953.69	0.01%
AUSTRIA GOVT BUND	B05KYX	14,117.22	18,892.50	0.09%
AUSTRIA GOVT BUND	B2QRTH	15,522.08	21,203.54	0.10%
AUSTRIA GOVT BUND	B2PDRZ	12,795.65	23,187.85	0.11%
SOUTH AFRICA REPUBLIC OF GOVT BND	B03YY8	43,764.00	3,351.85	0.02%
SOUTH AFRICA REPUBLIC OF GOVT BND	B0BC6S	56,644.61	4,258.10	0.02%
SOUTH AFRICA REPUBLIC OF GOVT BND	B1W32L	95,541.55	5,106.71	0.02%
SOUTH AFRICA REPUBLIC OF GOVT BND	B1BKQ2	197,048.94	16,813.09	0.08%
SPAIN GOVT OBLIGAC	B4KCF5	16,962.24	27,605.20	0.13%
SPAIN GOVT OBLIGAC	B6305Y	23,365.04	31,039.48	0.15%
SPAIN GOVT OBLIGAC	704058	20,113.78	35,222.44	0.17%
SWITZERLAND GOVT BUND	540803	4,557.65	5,946.27	0.03%
SWITZERLAND GOVT BUND	543908	5,612.46	8,302.28	0.04%
US TREASURY	291759	5,593.50	6,225.87	0.03%
US TREASURY	291693	5,682.83	6,434.79	0.03%
US TREASURY	291720	5,118.21	6,196.17	0.03%
US TREASURY	291315	9,190.29	11,723.86	0.06%
US TREASURY	293322	6,798.54	8,431.75	0.04%
US TREASURY	288816	8,024.92	10,393.54	0.05%
US TREASURY	294157	5,123.18	7,035.01	0.03%
US TREASURY	212455	9,413.84	12,876.40	0.06%
US TREASURY	228526	6,567.39	8,600.31	0.04%
US TREASURY	230727	8,359.05	10,887.96	0.05%
US TREASURY	238870	6,085.34	7,875.16	0.04%
US TREASURY	254590	8,286.46	11,959.36	0.06%
US TREASURY	272461	13,271.91	17,871.21	0.08%
US TREASURY	BOYBFV	14,514.31	18,754.23	0.09%
US TREASURY	B23Y8Q	6,424.00	8,902.89	0.04%
US TREASURY	B2PKS3	6,780.15	8,656.76	0.04%
US TREASURY	B3CJB2	7,650.87	10,014.23	0.05%
US TREASURY	B527Q4	12,543.04	14,223.53	0.07%
US TREASURY	B41K8R	11,634.03	14,742.02	0.07%

US TREASURY	B43HGR	12,429.58	16,147.68	0.08%
US TREASURY	B59RHH	13,381.27	17,254.94	0.08%
US TREASURY	B3M387	22,266.27	29,451.40	0.14%
US TREASURY	B3TCBS	18,744.87	24,207.96	0.11%
US TREASURY	B50PG3	16,260.31	19,425.84	0.09%
US TREASURY	B5M086	17,176.17	21,835.23	0.10%
US TREASURY	B3RFGR	18,892.90	25,502.72	0.12%
US TREASURY	B3T9H0	14,636.51	18,969.07	0.09%
US TREASURY	B45947	16,241.91	19,071.15	0.09%
US TREASURY	B6ZKRY	14,660.77	15,692.44	0.07%
US TREASURY	B7FRYY	18,288.04	19,425.66	0.09%
US TREASURY	B80MSK	15,419.86	16,133.99	0.08%
US TREASURY	B75JF5	23,579.43	23,391.27	0.11%
US TREASURY	B8JB19	29,038.01	28,975.76	0.14%
US TREASURY	B89T3Q	29,450.76	31,201.67	0.15%
US TREASURY	B8W8CX	41,482.32	42,282.82	0.20%
US TREASURY	BCZQWC	34,372.97	39,623.08	0.19%
US TREASURY	BGK9QZ	41,454.79	49,209.32	0.23%
US TREASURY	BJTOZC	41,741.88	48,197.10	0.23%
US TREASURY	BM7S97	41,965.11	46,827.08	0.22%
US TREASURY	BPYD75	42,000.03	44,501.27	0.21%
US TREASURY	BSJWZQ	41,999.54	43,778.57	0.21%
US TREASURY	BVVT27	42,000.00	39,343.67	0.19%
US TREASURY	BXC4FZ	41,994.84	43,750.55	0.21%
US TREASURY	BYSJ1Z	41,999.35	42,387.66	0.20%
US TREASURY	BYQP1M	41,975.15	43,708.66	0.21%
US TREASURY	BD2C0D	38,989.91	36,419.26	0.17%
US TREASURY	BYZ2TS	38,989.70	36,631.04	0.17%
US TREASURY	BD1FML	38,999.98	34,437.74	0.16%
US TREASURY	BZ1BP6	38,940.03	39,534.84	0.19%
US TREASURY	BDRJ2Q	38,999.96	40,302.33	0.19%
US TREASURY	BF0T9Z	38,994.56	40,602.96	0.19%
US TREASURY	BF53YK	26,999.97	26,535.91	0.13%
FRANCE GOVT OAT	B2NTF0	32,162.32	64,110.60	0.30%
US TREASURY	BDH26G	63,215.39	59,334.81	0.28%
US TREASURY	BDGLNR	23,999.95	23,707.99	0.11%
US TREASURY	BZ1N76	28,000.02	26,975.31	0.13%
US TREASURY	BZ1N79	34,000.30	33,170.29	0.16%
US TREASURY	BD5MF9	23,999.96	23,730.01	0.11%
US TREASURY	BDCSGC	24,000.06	24,010.44	0.11%

US TREASURY	BF8FPW	25,993.34	26,012.24	0.12%
US TREASURY	BD36HF	28,000.02	28,058.11	0.13%
US TREASURY	BD36HC	34,000.10	34,036.15	0.16%
US TREASURY	BF53YH	23,999.98	23,975.38	0.11%
US TREASURY	BF53YJ	43,000.07	42,845.54	0.20%
US TREASURY	BZ7PDQ	34,000.02	33,583.20	0.16%
US TREASURY	BZ7PDP	26,000.07	25,918.14	0.12%
US TREASURY	BZ7PDR	28,000.01	27,544.76	0.13%
US TREASURY	BD5YGY	24,000.02	23,850.57	0.11%
US TREASURY	BGRGJG	29,343.10	29,418.70	0.14%
US TREASURY	BH13VK	23,463.15	23,859.76	0.11%
US TREASURY	BHBPMP	32,935.95	33,095.48	0.16%
US TREASURY	BHBXYP	23,240.04	23,887.06	0.11%
US TREASURY	BJ8S1J	30,827.05	30,938.77	0.15%
US TREASURY	BJ8S16	25,133.06	25,572.30	0.12%
US TREASURY	BJT0TY	49,814.82	51,901.18	0.25%
US TREASURY	BK01CD	25,686.10	25,974.38	0.12%
US TREASURY	BK01C5	32,490.05	32,564.69	0.15%
US TREASURY	BKXH1X	25,315.12	25,765.07	0.12%
US TREASURY	BKXH1Y	33,992.38	34,093.83	0.16%
US TREASURY	BLT2LQ	30,332.88	30,630.66	0.14%
US TREASURY	BPYD73	65,998.70	67,131.66	0.32%
US TREASURY	BQ717J	29,000.53	29,276.42	0.14%
US TREASURY	BQ7178	34,999.98	35,148.04	0.17%
US TREASURY	BQXKZK	28,999.91	29,350.90	0.14%
US TREASURY	BQXKYM	35,000.25	35,183.78	0.17%
US TREASURY	BRYG9R	34,999.93	35,222.45	0.17%
US TREASURY	BRYG9Z	29,000.02	29,448.62	0.14%
US TREASURY	BSJWZX	65,999.88	66,893.42	0.32%
US TREASURY	BSQXQH	29,000.08	29,241.92	0.14%
US TREASURY	BSQXQ8	35,000.12	35,168.32	0.17%
US TREASURY	BTL1KT	29,000.01	29,483.09	0.14%
US TREASURY	BTL1KM	35,000.05	35,221.48	0.17%
US TREASURY	BVJF8C	35,000.01	34,845.19	0.16%
US TREASURY	BVJF87	29,000.01	28,639.81	0.14%
US TREASURY	BVVT3Q	65,994.38	65,270.86	0.31%
US TREASURY	BVY5G	29,000.02	28,901.02	0.14%
US TREASURY	BVYXJ2	34,998.95	34,895.48	0.16%
US TREASURY	BWFRB5	29,000.00	28,836.28	0.14%
US TREASURY	BWFRBR	35,000.03	34,840.22	0.16%

US TREASURY	B3FG90	27,011.54	28,092.59	0.13%
US TREASURY	BWSSM9	34,999.61	35,028.06	0.17%
US TREASURY	BYS2RD	65,895.05	64,940.14	0.31%
US TREASURY	B4Y5PZ	24,534.86	25,064.43	0.12%
US TREASURY	B419LQ	31,363.13	32,585.49	0.15%
US TREASURY	BYXYL7	28,965.00	28,938.87	0.14%
US TREASURY	BYXYL6	35,000.01	34,806.37	0.16%
US TREASURY	BYXIBX	28,960.02	28,697.29	0.14%
US TREASURY	BYSVW9	34,999.98	34,744.56	0.16%
US TREASURY	BYV8LV	24,000.03	23,972.24	0.11%
US TREASURY	BYRLCJ	35,000.03	34,913.98	0.17%
US TREASURY	B43JZT	27,655.02	28,879.66	0.14%
US TREASURY	B5BGV2	36,516.38	38,409.55	0.18%
US TREASURY	BZ1JYD	28,979.76	29,105.28	0.14%
US TREASURY	BYQ26R	65,998.54	66,575.25	0.31%
US TREASURY	BYP9C9	24,000.14	24,074.58	0.11%
US TREASURY	BYWKS8	28,985.25	29,231.96	0.14%
US TREASURY	BYVX7L	35,000.98	35,143.13	0.17%
US TREASURY	B3PPMT	43,851.28	46,181.86	0.22%
US TREASURY	BYNKWM	23,993.88	24,040.59	0.11%
US TREASURY	BYV8NP	28,965.02	29,330.73	0.14%
US TREASURY	BDFFS9	34,999.95	35,221.30	0.17%
US TREASURY	BDGS5C	23,996.89	23,967.13	0.11%
US TREASURY	BDHLRB	34,999.63	34,712.25	0.16%
US TREASURY	B45HSW	31,597.34	33,583.85	0.16%
US TREASURY	B55QYC	34,231.66	35,314.80	0.17%
US TREASURY	BDHLRK	28,951.95	28,686.60	0.14%
US TREASURY	BD2COG	63,039.95	60,080.79	0.28%
US TREASURY	BD2COC	23,999.95	23,808.90	0.11%
US TREASURY	BYXFJ1	27,950.02	27,274.29	0.13%
US TREASURY	BYXFJ3	33,999.94	33,367.96	0.16%
US TREASURY	BDCVZ4	24,000.73	23,869.57	0.11%
US TREASURY	B5TCBD	54,875.67	57,013.46	0.27%
US TREASURY	B64GN6	45,591.46	48,673.84	0.23%
US TREASURY	BD2MXT	27,908.01	27,173.84	0.13%
US TREASURY	BD2MXC	34,000.04	33,451.55	0.16%
US TREASURY	BYTNPH	23,999.29	23,893.36	0.11%
US TREASURY	BYMHDL	33,999.85	33,762.20	0.16%
US TREASURY	B3V3W1	29,573.40	31,351.63	0.15%
US TREASURY	BYMMK2	28,000.02	27,613.26	0.13%

US TREASURY	BYZ2XV	63,089.66	60,244.50	0.28%
US TREASURY	BYZ2TG	24,000.04	23,863.66	0.11%
US TREASURY	BD2C5L	27,994.78	27,547.18	0.13%
US TREASURY	BD2BWQ	34,000.24	33,696.91	0.16%
US TREASURY	BYT3W1	24,000.02	23,830.54	0.11%
US TREASURY	B4WLSH	40,512.03	41,133.14	0.19%
US TREASURY	B5OPRM	47,480.97	47,480.48	0.22%
US TREASURY	B55HZR	12,290.03	12,426.30	0.06%
US TREASURY	B42546	41,044.13	41,656.95	0.20%
US TREASURY	B57KWN	13,817.17	13,877.14	0.07%
US TREASURY	B7FRQ3	17,240.04	17,293.49	0.08%
US TREASURY	BD59XF	34,000.07	33,310.43	0.16%
US TREASURY	BD59XC	27,989.89	27,086.12	0.13%
US TREASURY	BDFVZ6	23,999.92	23,740.42	0.11%
US TREASURY	BDHC7H	34,000.08	33,237.20	0.16%
US TREASURY	BDHC7G	28,000.08	26,842.20	0.13%
US TREASURY	B7MZ8N	23,702.04	23,702.67	0.11%
US TREASURY	B7MSV6	30,089.69	30,361.13	0.14%
US TREASURY	B7LM87	23,090.99	23,104.02	0.11%
US TREASURY	B7ZPR5	11,465.02	11,478.98	0.05%
US TREASURY	B7MWMY	35,875.70	35,961.14	0.17%
US TREASURY	B83QTP	25,670.40	25,697.03	0.12%
US TREASURY	B8J5R5	12,134.75	12,118.17	0.06%
US TREASURY	BDQPS8	28,000.00	26,922.14	0.13%
US TREASURY	BDQPS4	34,000.05	33,108.26	0.16%
US TREASURY	BDQPS7	25,999.33	25,841.91	0.12%
US TREASURY	BD6CS2	24,002.51	23,879.77	0.11%
US TREASURY	BDR0D7	34,000.03	33,418.41	0.16%
US TREASURY	BDR0D6	25,998.87	25,905.26	0.12%
US TREASURY	BDR0DB	28,000.01	27,494.19	0.13%
US TREASURY	B88HY1	11,143.85	11,086.81	0.05%
US TREASURY	B8P342	14,484.02	14,353.39	0.07%
US TREASURY	B7YNMR	22,331.90	22,088.03	0.10%
US TREASURY	B8H7TK	15,143.02	15,022.38	0.07%
US TREASURY	B7WGY7	19,249.02	19,070.40	0.09%
US TREASURY	B89G5B	14,343.05	14,347.10	0.07%
US TREASURY	B8P4ZL	34,069.98	33,739.18	0.16%
US TREASURY	BZ1BP7	62,929.18	61,820.45	0.29%
US TREASURY	BZ1BQ0	24,003.07	23,842.72	0.11%
US TREASURY	BDR70B	25,996.36	25,967.90	0.12%

US TREASURY	BDR709	28,000.27	28,287.07	0.13%
US TREASURY	BYPFJZ	33,999.95	34,084.07	0.16%
US TREASURY	BYM4Q7	23,999.87	24,023.68	0.11%
US TREASURY	BDG08Z	34,000.01	34,389.32	0.16%
US TREASURY	BDRXBD	26,003.91	26,039.10	0.12%
US TREASURY	B99CZG	22,017.05	21,858.40	0.10%
US TREASURY	B88847	21,918.00	21,790.09	0.10%
US TREASURY	B97H9T	22,985.02	22,954.56	0.11%
US TREASURY	B9CDBG	50,574.85	50,727.33	0.24%
US TREASURY	B84QCJ	19,361.02	19,247.50	0.09%
US TREASURY	B93NS1	17,703.06	17,516.82	0.08%
US TREASURY	BDG08X	28,000.19	28,426.76	0.13%
US TREASURY	BD8PTY	23,997.62	23,984.38	0.11%
US TREASURY	BYYYC	26,002.30	25,953.52	0.12%
US TREASURY	BDFFCZ	34,000.11	34,131.27	0.16%
US TREASURY	BYQFT3	28,000.08	28,356.45	0.13%
US TREASURY	BYPG9T	63,000.89	62,822.74	0.30%
US TREASURY	B9DDL8	23,834.05	23,682.99	0.11%
US TREASURY	B8W8CY	51,428.76	51,014.80	0.24%
US TREASURY	BB2D0H	24,239.64	24,223.16	0.11%
US TREASURY	BBPM6Y	16,132.04	16,332.76	0.08%
US TREASURY	BCF0W4	22,974.22	23,300.97	0.11%
US TREASURY	BCZP0C	43,652.92	44,908.34	0.21%
US TREASURY	BD5JSB	26,140.24	26,563.09	0.13%
US TREASURY	BF23JH	20,346.86	20,564.49	0.10%
US TREASURY	BDFLC4	24,000.04	23,946.48	0.11%
US TREASURY	BF0SH8	25,997.32	25,918.11	0.12%
US TREASURY	BF0SHB	28,000.01	28,073.32	0.13%
US TREASURY	BF0SH9	33,999.86	34,065.23	0.16%
US TREASURY	BDFX3V	23,999.83	24,054.95	0.11%
US TREASURY	BD0NPC	28,000.17	28,005.11	0.13%
US TREASURY	BD0N7Z	33,999.97	33,996.44	0.16%
US TREASURY	BD0N7W	25,999.79	25,933.01	0.12%
US TREASURY	BG4KTN	27,935.01	28,225.21	0.13%
US TREASURY	BG3KW2	31,457.95	31,575.19	0.15%
US TREASURY	BGJ3N5	57,481.11	60,346.52	0.29%
US TREASURY	BLT2LR	26,672.01	27,393.94	0.13%
US TREASURY	BM7S9P	64,276.79	66,352.02	0.31%
US TREASURY	BMTSDK	34,949.00	35,159.38	0.17%
US TREASURY	BMTSDM	27,417.26	27,839.14	0.13%

US TREASURY	BNGY44	27,039.03	27,537.40	0.13%
US TREASURY	BNGY4N	34,850.15	35,094.26	0.17%
US TREASURY	BPFJXW	34,387.68	34,581.94	0.16%
US TREASURY	BPFJZX	28,999.45	29,609.14	0.14%
US TREASURY	BX2HOT	29,000.02	29,031.82	0.14%
US TREASURY	BYP333	23,999.44	24,123.18	0.11%
US TREASURY	BD2Z8K	34,000.33	34,238.04	0.16%
US TREASURY	BD2Z8L	28,000.01	28,018.07	0.13%
US TREASURY	BFOT9Y	62,995.05	63,840.02	0.30%
US TREASURY	BFOTB0	23,999.96	24,088.46	0.11%
US TREASURY	BXC4FY	65,966.17	66,083.34	0.31%
US TREASURY	BY8L2B	28,999.68	29,157.67	0.14%
US TREASURY	BYLY8M	34,995.03	35,093.25	0.17%
US TREASURY	BYSKX2	29,000.01	29,431.12	0.14%
US TREASURY	BYSKX3	34,999.89	35,170.43	0.17%
US TREASURY	BZ03RT	34,995.00	35,114.32	0.17%
US TREASURY	BYVVV8	29,000.01	29,203.66	0.14%
US TREASURY	BDZZ3H	33,999.81	33,979.64	0.16%
US TREASURY	BDZZ3G	25,999.88	26,028.21	0.12%
US TREASURY	BDZZ3J	28,000.04	27,957.02	0.13%
US TREASURY	BF0NCN	24,000.03	24,052.78	0.11%
US TREASURY	BF1TTD	25,999.96	25,990.90	0.12%
US TREASURY	BF1TTC	33,999.89	33,914.90	0.16%
US TREASURY	BF1TTF	28,000.01	27,892.13	0.13%
UNITED KINGDOM AND NORTHERN IRELAND GOVERNMENT GOVT GILTTSY	B89PJD	16,089.86	27,734.05	0.13%
UNITED KINGDOM AND NORTHERN IRELAND GOVERNMENT GOVT GILTTSY	B44SH0	12,787.20	22,213.16	0.10%
UNITED KINGDOM AND NORTHERN IRELAND GOVERNMENT GOVT GILTTSY	B7H4N6	10,121.16	20,262.01	0.10%
UNITED KINGDOM AND NORTHERN IRELAND GOVERNMENT GOVT GILTTSY	B89811	15,647.46	28,313.04	0.13%
UNITED KINGDOM AND NORTHERN IRELAND GOVERNMENT GOVT GILTTSY	B7MJ76	21,834.01	40,450.57	0.19%
UNITED KINGDOM AND NORTHERN IRELAND GOVERNMENT GOVT GILTTSY	B7W4LN	17,353.85	39,402.07	0.19%
UNITED KINGDOM AND NORTHERN IRELAND GOVERNMENT GOVT GILTTSY	B751P2	17,870.30	26,539.91	0.13%
UNITED KINGDOM AND NORTHERN IRELAND GOVERNMENT GOVT GILTTSY	B83W9Z	15,320.00	31,132.28	0.15%
UNITED KINGDOM AND NORTHERN IRELAND GOVERNMENT GOVT GILTTSY	B84KZS	17,152.89	35,210.30	0.17%
UNITED KINGDOM AND NORTHERN IRELAND GOVERNMENT GOVT GILTTSY	B89Y3P	13,361.41	23,076.24	0.11%
UNITED KINGDOM AND NORTHERN IRELAND GOVERNMENT GOVT GILTTSY	B885DT	14,525.19	32,638.15	0.15%
UNITED KINGDOM AND NORTHERN IRELAND GOVERNMENT GOVT GILTTSY	B76YZR	14,187.48	30,156.73	0.14%
IRELAND GOVT BND	B28HXX	8,835.08	11,441.54	0.05%

IRELAND GOVT BND	B2QTFG	7,297.56	9,466.66	0.04%
IRELAND GOVT BND	B6089D	6,385.92	8,962.16	0.04%
IRELAND GOVT BND	B4TV0D	11,490.35	18,845.17	0.09%
IRELAND GOVT BND	B60Z61	8,057.53	11,556.04	0.05%
ITALY GOVT BTP	B2QW2C	24,799.15	35,576.54	0.17%
SOUTH AFRICA REPUBLIC OF GOVT BND	B1W31D	53,374.71	3,865.51	0.02%
AUSTRIA GOVT BUND	B2NHQ3	11,317.73	14,666.57	0.07%
AUSTRIA GOVT BUND	B5ZTSV	8,451.37	14,008.00	0.07%
SINGAPORE GOVT BND	B41J0Z	5,800.00	4,563.30	0.02%
SWEDEN GOVT BND	B7TVTP	98,550.12	13,223.59	0.06%
SWEDEN GOVT BND	B8GNP8	45,250.45	7,505.09	0.04%
JGB #42 20YRS BND	614273	963,400.00	8,907.14	0.04%
JGB #43 20YRS BND	616533	739,700.00	6,968.65	0.03%
JGB #44 20YRS BND	620288	608,700.00	5,760.09	0.03%
JGB #45 20YRS BND	620821	613,700.00	5,793.84	0.03%
JGB #46 20YRS BND	624734	559,700.00	5,315.86	0.03%
JGB #47 20YRS BND	634448	561,500.00	5,332.63	0.03%
JGB #48 20YRS BND	629296	930,000.00	9,012.70	0.04%
JGB #49 20YRS BND	632418	508,800.00	4,867.63	0.02%
JGB #50 20YRS BND	634471	666,200.00	6,332.00	0.03%
JGB #51 20YRS BND	638332	532,200.00	5,122.67	0.02%
JGB #52 20YRS BND	641579	464,700.00	4,489.69	0.02%
JGB #6 30YRS BND	642175	458,000.00	5,309.14	0.03%
JGB #53 20YRS BND	642682	622,400.00	6,071.27	0.03%
JGB #54 20YRS BND	650714	588,500.00	5,764.17	0.03%
JGB #55 20YRS BND	652184	738,700.00	7,177.38	0.03%
JGB #7 30YRS BND	652846	576,200.00	6,637.83	0.03%
JGB #56 20YRS BND	653447	539,300.00	5,287.88	0.02%
JGB #57 20YRS BND	654166	636,000.00	6,207.73	0.03%
JGB #58 20YRS BND	655329	665,700.00	6,497.33	0.03%
JGB #8 30YRS BND	656579	541,500.00	5,899.66	0.03%
JGB #59 20YRS BND	657841	623,900.00	6,082.26	0.03%
JGB #60 20YRS BND	659313	565,300.00	5,427.93	0.03%
JGB #61 20YRS BND	660946	731,800.00	6,884.14	0.03%
JGB #10 30YRS BND	661808	579,449.00	5,744.92	0.03%
JGB #62 20YRS BND	665033	706,600.00	6,602.59	0.03%
JGB #11 30YRS BND	667297	598,400.00	6,443.58	0.03%
JGB #63 20YRS BND	668233	718,200.00	7,094.65	0.03%
JGB #64 20YRS BND	670855	801,000.00	7,952.01	0.04%
JGB #12 30YRS BND	671447	532,900.00	6,012.21	0.03%

JGB #65 20YRS BND	672647	764,100.00	7,649.14	0.04%
JGB #66 20YRS BND	674197	470,700.00	4,684.80	0.02%
JGB #13 30YRS BND	674329	781,700.00	8,754.63	0.04%
JGB #67 20YRS BND	B00LHM	639,800.00	6,403.00	0.03%
JGB #14 30YRS BND	B00V8T	994,000.00	11,662.71	0.06%
JGB #68 20YRS BND	B00XRY	550,800.00	5,607.83	0.03%
JGB #69 20YRS BND	B019JK	1,042,300.00	10,551.66	0.05%
JGB #70 20YRS BND	B01KB6	1,173,100.00	12,198.79	0.06%
JGB #15 30YRS BND	B02KTV	1,069,600.00	12,783.95	0.06%
JGB #72 20YRS BND	B02WHX	1,493,800.00	15,250.86	0.07%
JGB #71 20YRS BND	B02MZS	526,800.00	5,412.46	0.03%
JGB #16 30YRS BND	B03FBM	845,500.00	10,070.17	0.05%
JGB #73 20YRS BND	B053BB	1,142,100.00	11,687.63	0.06%
JGB #17 30YRS BND	B068LQ	864,400.00	10,228.56	0.05%
JGB #75 20YRS BND	B06MX5	550,300.00	5,665.87	0.03%
JGB #18 30YRS BND	B07G7Z	1,182,500.00	13,769.06	0.07%
JGB #76 20YRS BND	B07W0N	794,500.00	8,074.31	0.04%
JGB #77 20YRS BND	B09GN4	489,000.00	5,002.16	0.02%
JGB #78 20YRS BND	B0BV7F	707,500.00	7,245.14	0.03%
JGB #19 30YRS BND	B0DMX1	846,800.00	9,927.10	0.05%
JGB #79 20YRS BND	B0FHV3	485,900.00	5,010.38	0.02%
JGB #80 20YRS BND	B0J2F9	509,300.00	5,287.86	0.02%
JGB #81 20YRS BND	B0LFY5	798,800.00	8,233.80	0.04%
JGB #20 30YRS BND	B0MT63	779,600.00	9,344.64	0.04%
JGB #82 20YRS BND	B0N7H5	706,900.00	7,336.75	0.03%
JGB #83 20YRS BND	B0TNMN	816,300.00	8,541.68	0.04%
JGB #21 30YRS BND	B0X4BZ	892,200.00	10,480.49	0.05%
JGB #84 20YRS BND	B0XPJP	1,232,600.00	12,804.84	0.06%
JGB #85 20YRS BND	B11LK3	988,800.00	10,336.84	0.05%
JGB #22 30YRS BND	B134Y0	1,069,400.00	12,848.14	0.06%
JGB #86 20YRS BND	B13Q2Y	704,300.00	7,468.78	0.04%
JGB #88 20YRS BND	B17MTZ	1,249,700.00	13,374.81	0.06%
JGB #87 20YRS BND	B15SKK	727,600.00	7,661.07	0.04%
JGB #23 30YRS BND	B197LL	1,056,800.00	12,775.54	0.06%
JGB #89 20YRS BND	B1CNN5	679,400.00	7,217.02	0.03%
JGB #90 20YRS BND	B1FLFZ	1,410,200.00	14,965.83	0.07%
JGB #24 30YRS BND	B1G3S1	818,900.00	9,868.52	0.05%
JGB #91 20YRS BND	B1GBY3	546,600.00	5,844.37	0.03%
JGB #92 20YRS BND	B1LBM3	1,959,300.00	20,809.13	0.10%
JGB #25 30YRS BND	B1P144	982,600.00	11,590.14	0.05%

JGB #93 20YRS BND	B1VKKH	911,100.00	9,593.55	0.05%
JGB #26 30YRS BND	B1W62F	1,818,700.00	21,669.25	0.10%
JGB #94 20YRS BND	B1WM1L	1,397,600.00	14,833.51	0.07%
JGB #95 20YRS BND	B1Z68T	1,012,500.00	11,013.93	0.05%
JGB #96 20YRS BND	B2485Y	653,700.00	6,995.36	0.03%
JGB #97 20YRS BND	B27ZKV	1,229,400.00	13,243.34	0.06%
JGB #27 30YRS BND	B28PKL	1,611,300.00	19,503.29	0.09%
JGB #1 40YRS BND	B292T5	706,500.00	8,837.37	0.04%
JGB #98 20YRS BND	B29L8H	880,000.00	9,401.85	0.04%
JGB #99 20YRS BND	B2B35B	2,151,600.00	23,161.33	0.11%
JGB #100 20YRS BND	B2QGGK	1,803,200.00	19,551.63	0.09%
JGB #28 30YRS BND	B2QZ3B	2,159,200.00	26,194.19	0.12%
JGB #101 20YRS BND	B39MW4	857,400.00	9,455.03	0.04%
JGB #102 20YRS BND	B3B1VM	1,196,400.00	13,304.76	0.06%
JGB #103 20YRS BND	B3C9JW	861,800.00	9,500.41	0.04%
JGB #104 20YRS BND	B3CVL1	822,000.00	8,902.62	0.04%
JGB #105 20YRS BND	B3D8KL	1,517,700.00	16,415.07	0.08%
JGB #29 30YRS BND	B3F3YW	2,131,600.00	25,534.08	0.12%
JGB #106 20YRS BND	B3F8T2	823,700.00	8,988.53	0.04%
JGB #297 10YRS BND	B3KB2X	1,522,816.00	13,834.50	0.07%
JGB #107 20YRS BND	B3KM7S	820,200.00	8,935.37	0.04%
JGB #298 10YRS BND	B3KXWB	2,817,543.00	25,559.33	0.12%
JGB #108 20YRS BND	B4JMPO	1,391,200.00	14,875.14	0.07%
JGB #299 10YRS BND	B61PKR	3,474,663.00	31,526.97	0.15%
JGB #109 20YRS BND	B3LZMP	1,323,000.00	14,124.31	0.07%
JGB #30 30YRS BND	B3VV70	2,428,500.00	28,724.33	0.14%
JGB #110 20YRS BND	B40R3K	1,609,200.00	17,503.78	0.08%
JGB #300 10YRS BND	B4X2LK	1,906,452.00	17,348.54	0.08%
JGB #2 40YRS BND	B4RKLO	1,240,900.00	14,984.86	0.07%
JGB #301 10YRS BND	B51BMV	2,870,226.00	26,318.46	0.12%
JGB #111 20YRS BND	B619NG	915,800.00	10,128.58	0.05%
JGB #302 10YRS BND	B3LR1S	2,101,742.00	19,234.54	0.09%
JGB #112 20YRS BND	B3YFPT	1,740,900.00	19,071.39	0.09%
JGB #303 10YRS BND	B40Z1Z	3,704,020.00	33,909.68	0.16%
JGB #113 20YRS BND	B4MR23	1,992,100.00	21,789.05	0.10%
JGB #304 10YRS BND	B4VSFT	1,993,265.00	18,212.63	0.09%
JGB #31 30YRS BND	B4TQX8	2,185,000.00	25,524.17	0.12%
JGB #305 10YRS BND	B4WDSV	5,035,963.00	46,315.87	0.22%
JGB #114 20YRS BND	B58CCL	1,786,200.00	19,660.79	0.09%
SPAIN GOVT OBLIGAC	542014	23,320.00	40,725.09	0.19%

SWITZERLAND GOVT BUND	B01FNX	5,844.09	6,480.79	0.03%
SINGAPORE GOVT BND	B0JCHN	4,800.00	3,721.39	0.02%
SINGAPORE GOVT BND	B1SVY3	7,500.00	6,170.35	0.03%
SINGAPORE GOVT BND	B4YN9R	8,100.00	6,128.70	0.03%
SWITZERLAND GOVT BUND	B0H1P8	4,595.87	5,162.43	0.02%
SPAIN GOVT OBLIGAC	B4W9FW	20,758.37	26,938.12	0.13%
SPAIN GOVT OBLIGAC	B5063W	21,161.15	28,376.91	0.13%
SWEDEN GOVT BND	777407	96,053.78	14,248.17	0.07%
SINGAPORE GOVT BND	B2485Q	4,600.00	3,620.53	0.02%
AUSTRIA GOVT BUND	B3SPHJ	8,535.17	12,061.21	0.06%
AUSTRIA GOVT BUND	B7N9BK	10,546.38	15,122.20	0.07%
AUSTRIA GOVT BUND	B71HY0	3,473.67	6,829.81	0.03%
AUSTRIA GOVT BUND	B83F8Y	7,278.92	9,032.83	0.04%
AUSTRIA GOVT BUND	B8N48D	6,799.27	11,108.88	0.05%
AUSTRIA GOVT BUND	B95ZBJ	6,912.30	9,851.61	0.05%
AUSTRIA GOVT BUND	B92N78	11,696.59	15,514.02	0.07%
AUSTRIA GOVT BUND	BF4B9G	7,080.00	8,616.53	0.04%
AUSTRIA GOVT BUND	BN40JT	10,280.35	13,584.57	0.06%
AUSTRIA GOVT BUND	BRCYY4	7,159.50	8,630.67	0.04%
AUSTRIA GOVT BUND	BYNQMB	10,421.94	13,287.54	0.06%
AUSTRIA GOVT BUND	BYN4DM	4,502.04	5,272.65	0.02%
AUSTRIA GOVT BUND	BYN4DC	11,572.87	14,029.15	0.07%
AUSTRIA GOVT BUND	BYYB64	2,500.00	2,547.79	0.01%
AUSTRIA GOVT BUND	BYYDFV	5,376.25	6,353.51	0.03%
AUSTRIA GOVT BUND	BYYLYS	7,593.59	8,893.63	0.04%
AUSTRIA GOVT BUND	BYWJV2	3,500.00	4,247.62	0.02%
AUSTRIA GOVT BUND	BF16NF	4,000.00	4,764.34	0.02%
AUSTRALIA GOVT BND	B5SRJW	24,599.90	22,470.41	0.11%
AUSTRALIA GOVT BND	B3WCKZ	24,099.90	22,332.88	0.11%
AUSTRALIA GOVT BND	B75M0X	28,499.57	26,471.91	0.13%
AUSTRALIA GOVT BND	B8H46C	25,500.00	20,443.56	0.10%
AUSTRALIA GOVT BND	B8NFF9	18,899.92	15,491.98	0.07%
AUSTRALIA GOVT BND	BB0RD9	27,900.00	23,044.99	0.11%
AUSTRALIA GOVT BND	BGM0N7	13,100.00	12,218.24	0.06%
AUSTRALIA GOVT BND	BH6XD6	14,331.00	11,576.09	0.05%
AUSTRALIA GOVT BND	BKRV2Z	32,400.00	28,778.20	0.14%
AUSTRALIA GOVT BND	BPCWWY	23,848.00	19,234.22	0.09%
AUSTRALIA GOVT BND	BR2XZ6	10,800.00	9,132.50	0.04%
AUSTRALIA GOVT BND	BWH646	6,950.00	5,117.28	0.02%
AUSTRALIA GOVT BND	BVYTSG	26,800.00	20,906.23	0.10%

AUSTRALIA GOVT BND	BYZB94	6,300.00	4,859.46	0.02%
AUSTRALIA GOVT BND	BYRPO	24,900.00	19,561.82	0.09%
AUSTRALIA GOVT BND	BYZK18	20,500.00	15,281.86	0.07%
AUSTRALIA GOVT BND	BYM54C	8,100.00	5,658.00	0.03%
AUSTRALIA GOVT BND	BD8D76	15,500.00	12,079.74	0.06%
AUSTRALIA GOVT BND	BYXQH7	17,500.00	13,654.48	0.06%
BELGIUM GOVT OLO #60	B60W84	17,299.00	31,916.41	0.15%
BELGIUM GOVT OLO #61	B4M0KT	16,945.00	23,764.07	0.11%
BELGIUM GOVT OLO #64	B4PMNY	9,723.00	15,676.66	0.07%
BELGIUM GOVT OLO #65	B77GQB	16,246.00	23,500.25	0.11%
BELGIUM GOVT OLO #66	B7MSP6	8,204.00	13,699.74	0.06%
BELGIUM GOVT OLO #67	B7VN8S	12,662.00	16,037.35	0.08%
BELGIUM GOVT OLO #68	B98Y02	13,652.00	18,369.20	0.09%
BELGIUM GOVT OLO #71	BDT2DG	9,737.00	16,918.00	0.08%
BELGIUM GOVT OLO #72	BJ3KJ8	15,885.00	21,964.08	0.10%
BELGIUM GOVT OLO #73	BKRHFF	7,250.00	10,907.64	0.05%
BELGIUM GOVT OLO #74	BV8WXZ	16,452.00	20,108.64	0.10%
BELGIUM GOVT OLO #75	BVG7BQ	10,193.00	11,913.81	0.06%
BELGIUM GOVT OLO #76	BYNFFF	6,627.00	8,480.39	0.04%
BELGIUM GOVT OLO #77	BYW8CL	14,388.00	17,703.22	0.08%
BELGIUM GOVT OLO #78	BYQ64Q	7,734.00	8,820.82	0.04%
BELGIUM GOVT OLO #80	BD5YBH	3,000.00	3,703.15	0.02%
BELGIUM GOVT OLO #79	BD5YBJ	4,992.00	5,970.71	0.03%
BELGIUM GOVT OLO #81	BDRW15	13,728.00	16,370.38	0.08%
BELGIUM GOVT OLO #83	BYP56X	3,000.00	3,864.05	0.02%
BELGIUM GOVT OLO #82	BDFLF7	5,255.00	6,330.08	0.03%
BELGIUM GOVT OLO #84	BF2MYY	3,000.00	3,568.93	0.02%
SWITZERLAND GOVT BUND	B3MX78	4,088.45	4,655.29	0.02%
GERMANY GOVT BUND	B3TKJ7	22,000.00	28,830.90	0.14%
GERMANY GOVT BUND	B4Y6DJ	15,000.00	25,894.91	0.12%
GERMANY GOVT BUND	B59NMD	16,000.00	20,553.78	0.10%
GERMANY GOVT BUND	B40Z1F	19,000.00	25,150.36	0.12%
GERMANY GOVT BUND	B63GF4	19,000.00	25,839.28	0.12%
GERMANY GOVT BUND	B6YXBD	16,000.00	20,989.68	0.10%
GERMANY GOVT BUND	B5VVKF	20,000.00	26,449.71	0.13%
GERMANY GOVT BUND	B3YW1N	24,000.00	31,336.64	0.15%
GERMANY GOVT BUND	B7X7Y9	22,000.00	33,787.67	0.16%
GERMANY GOVT BUND	B7YJD4	18,000.00	23,209.31	0.11%
GERMANY GOVT BUND	B9DK45	18,000.00	23,461.26	0.11%
GERMANY GOVT BUND	B9ZKDD	18,000.00	23,429.08	0.11%

GERMANY GOVT BOBL	BCZS9Q	17,000.00	20,654.12	0.10%
GERMANY GOVT BUND	BDV015	18,000.00	24,027.13	0.11%
GERMANY GOVT BOBL	BJ3V9W	16,000.00	19,495.75	0.09%
GERMANY GOVT BUND	BJK4W4	18,000.00	24,003.36	0.11%
GERMANY GOVT BUND	BK35KG	23,000.00	35,505.93	0.17%
GERMANY GOVT BOBL	BMM1Z9	16,000.00	19,321.73	0.09%
GERMANY GOVT BUND	BMTRVB	18,000.00	23,579.98	0.11%
GERMANY GOVT BOBL	BQQLW3	16,000.00	19,330.85	0.09%
GERMANY GOVT BUND	BQSC2Z	18,000.00	22,782.80	0.11%
GERMANY GOVT BUND	BVDZM9	23,000.00	28,139.12	0.13%
GERMANY GOVT BOBL	BV0LS1	20,000.00	24,036.73	0.11%
GERMANY GOVT BOBL	BYW38B	19,000.00	23,098.71	0.11%
GERMANY GOVT BUND	BYSG55	23,000.00	29,065.49	0.14%
GERMANY GOVT BUND	BDGS55	26,000.00	31,544.00	0.15%
GERMANY GOVT BOBL	BD2BZK	21,000.00	25,290.45	0.12%
GERMANY GOVT BUND	BD0PB9	25,000.00	28,761.66	0.14%
GERMANY GOVT BOBL	BD82J5	19,000.00	22,868.02	0.11%
GERMANY GOVT SCHATZE	BYMC86	13,000.00	15,507.07	0.07%
GERMANY GOVT BOBL	BDRJ35	18,000.00	21,629.76	0.10%
GERMANY GOVT BUND	BYW2H6	26,000.00	30,399.84	0.14%
GERMANY GOVT SCHATZE	BF01YC	13,000.00	15,537.96	0.07%
GERMANY GOVT SCHATZE	BYV2C9	13,000.00	15,563.40	0.07%
GERMANY GOVT BOBL	BF2F2F	11,000.00	13,179.56	0.06%
GERMANY GOVT BUND	BF425L	14,000.00	16,624.36	0.08%
GERMANY GOVT SCHATZE	BF44KS	5,000.00	5,991.92	0.03%
DENMARK GOVT	B42L6M	95,005.00	17,585.32	0.08%
DENMARK GOVT	B8QBWS	52,070.00	9,162.81	0.04%
DENMARK GOVT	BMTRT9	95,970.00	17,322.30	0.08%
DENMARK GOVT	BDD0NL	57,905.00	9,311.08	0.04%
DENMARK GOVT	BDG6ZK	37,845.00	6,009.31	0.03%
DENMARK GOVT	BF37LD	20,865.00	3,397.27	0.02%
SPAIN GOVT OBLIGAC	B3M35Z	21,731.53	32,729.93	0.15%
SPAIN GOVT OBLIGAC	B3XW1F	18,387.22	25,991.94	0.12%
SPAIN GOVT OBLIGAC	B3T9JJ	24,001.92	34,580.55	0.16%
SPAIN GOVT OBLIGAC	B5SNSG	19,388.95	31,864.87	0.15%
SPAIN GOVT OBLIGAC	B6W31Q	22,927.11	34,787.08	0.16%
SPAIN GOVT OBLIGAC	B9F7GF	21,666.65	33,167.79	0.16%
SPAIN GOVT OBLIGAC	B99L40	21,073.20	31,473.33	0.15%
SPAIN GOVT BONOS	BC5ZFJ	20,417.53	26,045.44	0.12%
SPAIN GOVT OBLIGAC	BC9SCG	17,540.84	28,836.08	0.14%

SPAIN GOVT OBLIGAC	BFNYDZ	13,167.42	23,339.22	0.11%
SPAIN GOVT BONOS	BJOXHV	22,405.17	28,084.25	0.13%
SPAIN GOVT OBLIGAC	BJ7BSG	21,185.84	30,272.57	0.14%
SPAIN GOVT OBLIGAC	BNBNZ1	23,500.03	31,962.17	0.15%
SPAIN GOVT BONOS	BP260B	23,102.99	28,582.44	0.14%
SPAIN GOVT OBLIGAC	BVGC31	19,795.11	24,506.50	0.12%
SPAIN GOVT OBLIGAC	BW1YWV	20,206.38	23,968.06	0.11%
SPAIN GOVT OBLIGAC	BYYTKZ	20,659.91	26,683.48	0.13%
SPAIN GOVT BONOS	BZ0YD3	19,079.19	23,405.04	0.11%
SPAIN GOVT OBLIGAC	BDGN60	19,626.61	24,606.54	0.12%
SPAIN GOVT BONOS	BD9WWS	18,138.86	21,643.02	0.10%
SPAIN GOVT BONOS	BDGSF7	21,979.32	26,709.01	0.13%
SPAIN GOVT OBLIGAC	BYZOLZ	12,272.33	15,071.30	0.07%
SPAIN GOVT OBLIGAC	BYZK81	5,856.12	7,400.66	0.03%
SPAIN GOVT OBLIGAC	BD9FJJ	22,604.65	26,844.56	0.13%
SPAIN GOVT BONOS	BYXJZD	20,900.01	24,906.19	0.12%
SPAIN GOVT OBLIGAC	BDFFX8	17,693.33	21,046.38	0.10%
SPAIN GOVT OBLIGAC	BYXQMJ	7,402.09	8,911.69	0.04%
SPAIN GOVT BONOS	BF3NP5	4,980.52	5,902.51	0.03%
SPAIN GOVT BONOS	BYXL3R	12,721.56	14,856.79	0.07%
FINLAND GOVT BND	B3NHT2	6,500.00	8,573.14	0.04%
FINLAND GOVT BND	B4KVVV	6,000.00	8,192.47	0.04%
FINLAND GOVT BND	B7MSTC	5,000.00	7,226.90	0.03%
FINLAND GOVT BND	B7QJOB	4,503.00	6,959.44	0.03%
FINLAND GOVT BND	B89T82	5,000.00	6,440.05	0.03%
FINLAND GOVT BND	B963VB	5,000.00	6,459.65	0.03%
FINLAND GOVT BND	BJH7VC	5,000.00	6,687.44	0.03%
FINLAND GOVT BND	BQKRH6	6,001.00	7,275.78	0.03%
FINLAND GOVT BND	BVVQ16	4,501.00	5,228.76	0.02%
FINLAND GOVT BND	BYNQDQ	4,001.00	4,929.92	0.02%
FINLAND GOVT BND	BZ57Z0	5,000.00	5,957.74	0.03%
FINLAND GOVT BND	BD72VP	5,000.00	5,897.02	0.03%
FINLAND GOVT BND	BDGJ2V	4,000.00	4,778.17	0.02%
FINLAND GOVT BND	BF44L7	3,000.00	3,505.83	0.02%
FRANCE GOVT OAT	B63D25	37,927.00	50,128.13	0.24%
FRANCE GOVT OAT	B3N626	13,055.00	24,887.25	0.12%
FRANCE GOVT OAT	B3X0WD	35,814.00	53,579.58	0.25%
FRANCE GOVT OAT	B4KWLC	36,562.00	48,161.36	0.23%
FRANCE GOVT OAT	B4XGWW	39,891.00	55,444.95	0.26%
FRANCE GOVT OAT	B79XGY	44,359.00	60,870.94	0.29%

FRANCE GOVT OAT	B7PZQR	37,454.00	53,844.25	0.25%
FRANCE GOVT OAT	B8KRH3	32,445.00	43,761.44	0.21%
FRANCE GOVT OAT	B9MBCD	24,908.00	39,501.75	0.19%
FRANCE GOVT OAT	B8HTNM	35,237.00	46,052.31	0.22%
FRANCE GOVT OAT	BBPQK7	21,755.00	26,409.84	0.12%
FRANCE GOVT OAT	BFZBB9	33,135.00	44,890.18	0.21%
FRANCE GOVT OAT	BJ7BT0	21,035.00	25,611.54	0.12%
FRANCE GOVT OAT	BM691B	33,208.00	46,327.67	0.22%
FRANCE GOVT OAT	BN796G	33,401.00	44,204.14	0.21%
FRANCE GOVT OAT	BNGZ55	28,737.00	34,893.98	0.16%
FRANCE GOVT OAT	BVVT6R	32,870.00	39,282.03	0.19%
FRANCE GOVT OAT	BVYVGS	22,969.00	27,498.53	0.13%
FRANCE GOVT OAT	BZ2K0F	25,572.00	31,758.67	0.15%
FRANCE GOVT OAT	BYSPTD	24,782.00	29,976.73	0.14%
FRANCE GOVT OAT	BYMFLX	33,749.00	41,905.75	0.20%
FRANCE GOVT OAT	BD9WRH	18,223.00	21,724.73	0.10%
FRANCE GOVT OAT	BYPKWB	27,522.00	32,382.56	0.15%
FRANCE GOVT OAT	BD0SJG	22,657.00	25,993.97	0.12%
FRANCE GOVT OAT	BD3BJ3	6,845.00	7,549.39	0.04%
FRANCE GOVT OAT	BYMHDP	21,852.00	26,160.36	0.12%
FRANCE GOVT OAT	BD6VMZ	28,224.00	32,195.13	0.15%
FRANCE GOVT OAT	BDSF8N	25,105.00	29,914.78	0.14%
FRANCE GOVT OAT	BDBRSQ	28,009.00	33,506.27	0.16%
FRANCE GOVT OAT	BDFFVN	8,632.00	10,627.44	0.05%
FRANCE GOVT OAT	BYWW6D	31,451.00	38,176.23	0.18%
FRANCE GOVT OAT	BYXX4T	11,006.00	13,580.06	0.06%
FRANCE GOVT OAT	BF51KN	4,338.00	5,131.10	0.02%
UNITED KINGDOM AND NORTHERN IRELAND GOVERNMENT GOVT GILTTSY	B8BQY9	18,483.14	27,186.91	0.13%
UNITED KINGDOM AND NORTHERN IRELAND GOVERNMENT GOVT GILTTSY	B73H4L	16,917.44	32,880.66	0.16%
UNITED KINGDOM AND NORTHERN IRELAND GOVERNMENT GOVT GILTTSY	B4RMG9	14,628.18	22,057.80	0.10%
UNITED KINGDOM AND NORTHERN IRELAND GOVERNMENT GOVT GILTTSY	B6RNH5	16,386.46	32,929.05	0.16%
UNITED KINGDOM AND NORTHERN IRELAND GOVERNMENT GOVT GILTTSY	B7L9SL	23,348.31	32,830.86	0.16%
UNITED KINGDOM AND NORTHERN IRELAND GOVERNMENT GOVT GILTTSY	B84Z9V	23,758.48	40,575.25	0.19%
UNITED KINGDOM AND NORTHERN IRELAND GOVERNMENT GOVT GILTTSY	B7Z536	17,338.94	25,097.10	0.12%
UNITED KINGDOM AND NORTHERN IRELAND GOVERNMENT GOVT GILTTSY	BBJNQY	17,126.19	36,831.90	0.17%
UNITED KINGDOM AND NORTHERN IRELAND GOVERNMENT GOVT GILTTSY	BDV0F1	32,736.19	45,087.09	0.21%
UNITED KINGDOM AND NORTHERN IRELAND GOVERNMENT GOVT GILTTSY	BHBFH4	15,030.22	22,524.21	0.11%

UNITED KINGDOM AND NORTHERN IRELAND GOVERNMENT GOVT GILTTSY	BN65R3	22,314.14	39,962.52	0.19%
UNITED KINGDOM AND NORTHERN IRELAND GOVERNMENT GOVT GILTTSY	BN65R1	26,077.09	36,543.02	0.17%
UNITED KINGDOM AND NORTHERN IRELAND GOVERNMENT GOVT GILTTSY	BTHH2R	20,877.70	29,876.96	0.14%
UNITED KINGDOM AND NORTHERN IRELAND GOVERNMENT GOVT GILTTSY	BYY5F5	25,700.36	35,598.10	0.17%
UNITED KINGDOM AND NORTHERN IRELAND GOVERNMENT GOVT GILTTSY	BYYMZX	18,193.00	30,594.29	0.14%
UNITED KINGDOM AND NORTHERN IRELAND GOVERNMENT GOVT GILTTSY	BYZW3G	20,021.60	27,484.90	0.13%
UNITED KINGDOM AND NORTHERN IRELAND GOVERNMENT GOVT GILTTSY	BD0PCK	25,747.03	34,111.94	0.16%
UNITED KINGDOM AND NORTHERN IRELAND GOVERNMENT GOVT GILTTSY	BDCHBW	17,939.58	21,886.95	0.10%
UNITED KINGDOM AND NORTHERN IRELAND GOVERNMENT GOVT GILTTSY	BZB26Y	6,500.49	8,497.58	0.04%
UNITED KINGDOM AND NORTHERN IRELAND GOVERNMENT GOVT GILTTSY	BD0XH2	9,272.00	12,364.79	0.06%
UNITED KINGDOM AND NORTHERN IRELAND GOVERNMENT GOVT GILTTSY	BDRHNP	15,538.06	20,611.23	0.10%
UNITED KINGDOM AND NORTHERN IRELAND GOVERNMENT GOVT GILTTSY	BF0H29	6,055.13	8,054.55	0.04%
IRELAND GOVT BND	B453JD	6,308.43	9,180.47	0.04%
IRELAND GOVT BND	B6X95T	8,030.95	11,580.54	0.05%
IRELAND GOVT BND	BJ38CR	9,156.55	12,443.03	0.06%
IRELAND GOVT BND	BJ38CQ	6,827.75	8,450.46	0.04%
IRELAND GOVT BND	BV8C91	7,218.90	8,872.75	0.04%
IRELAND GOVT BND	BV8C94	10,518.75	12,760.79	0.06%
IRELAND GOVT BND	BV8C9B	4,567.50	5,477.35	0.03%
ITALY GOVT BTP	B66YTQ	24,922.12	32,871.63	0.16%
ITALY GOVT BTP	B63Q9G	24,268.78	32,159.18	0.15%
ITALY GOVT BTP	B4143G	20,733.40	29,679.62	0.14%
ITALY GOVT BTP	B3NJCL	24,986.37	34,571.62	0.16%
ITALY GOVT BTP	B4T85T	20,635.58	29,104.78	0.14%
ITALY GOVT BTP	B79S2V	19,586.03	28,454.30	0.13%
ITALY GOVT BTP	B7M5HQ	21,378.39	31,607.31	0.15%
ITALY GOVT BTP	B9CDF5	21,783.65	31,946.02	0.15%
ITALY GOVT BTP	B8887Z	20,070.59	28,566.72	0.14%
ITALY GOVT BTP	B9B45S	17,119.36	25,727.51	0.12%
ITALY GOVT BTP	BCRYKK	23,264.57	32,887.82	0.16%
ITALY GOVT BTP	BD73C5	19,339.96	24,143.33	0.11%
ITALY GOVT BTP	BFNYK3	18,397.55	24,724.76	0.12%
ITALY GOVT BTP	BJLFKZ	18,316.16	22,815.49	0.11%
ITALY GOVT BTP	BK6WNG	19,826.00	26,948.66	0.13%
ITALY GOVT BTP	BMNDJV	23,156.45	30,566.76	0.14%
ITALY GOVT BTP	BNBRDG	17,657.88	22,371.12	0.11%
ITALY GOVT BTP	BNQ4Z0	16,393.16	20,017.38	0.09%

ITALY GOVT BTP	BQ13TN	20,383.77	25,773.28	0.12%
ITALY GOVT BTP	BSYB05	15,470.97	18,803.94	0.09%
ITALY GOVT BTP	BVFD72	15,552.83	18,486.27	0.09%
ITALY GOVT BTP	BVG7H1	17,784.50	21,744.23	0.10%
ITALY GOVT BTP	BW38YX	19,786.72	23,159.02	0.11%
ITALY GOVT BTP	BWFGFB	21,906.73	23,240.36	0.11%
ITALY GOVT BTP	BY58YM	16,458.15	19,834.04	0.09%
ITALY GOVT BTP	BZ1KR5	17,829.30	21,525.20	0.10%
ITALY GOVT BTP	BYNV6D	17,005.19	20,704.05	0.10%
ITALY GOVT BTP	BYZTX9	12,199.23	14,537.55	0.07%
ITALY GOVT BTP	BYT5CP	15,068.70	18,116.56	0.09%
ITALY GOVT BTP	BZCTDC	15,711.89	16,653.21	0.08%
ITALY GOVT BTP	BDCNSR	17,774.50	20,633.45	0.10%
ITALY GOVT BTP	BYSYNS	16,247.34	19,151.33	0.09%
ITALY GOVT BTP	BYZC42	17,414.77	20,694.09	0.10%
ITALY GOVT BTP	BD3B8N	12,117.34	14,408.89	0.07%
ITALY GOVT BTP	BD2YGS	14,900.00	16,160.28	0.08%
ITALY GOVT BTP	BDH63H	18,039.66	20,157.24	0.10%
ITALY GOVT BTP	BYV25Y	14,381.00	16,506.65	0.08%
ITALY GOVT BTP	BDGL8T	14,426.00	16,979.88	0.08%
ITALY GOVT BTP	BD3VHH	5,750.00	5,765.48	0.03%
ITALY GOVT BTP	BD3D60	15,663.50	18,589.89	0.09%
ITALY GOVT BTP	BYMZ29	8,857.10	10,174.77	0.05%
ITALY GOVT BTP	BYMTYV	16,325.00	19,604.15	0.09%
ITALY GOVT BTP	BDZTV3	16,650.50	20,238.78	0.10%
ITALY GOVT BTP	BYW8X5	15,107.46	18,462.78	0.09%
ITALY GOVT BTP	BZ0XJ9	16,882.72	20,111.15	0.10%
ITALY GOVT BTP	BYVMY0	6,500.00	7,845.47	0.04%
ITALY GOVT BTP	BD1MF4	10,509.13	12,345.13	0.06%
ITALY GOVT BTP	BD1KH1	8,341.45	9,902.83	0.05%
ITALY GOVT BTP	BF2PPK	4,000.50	4,687.53	0.02%
JGB #115 20YRS BND	B3P4Q3	1,031,100.00	11,461.67	0.05%
JGB #306 10YRS BND	B62NDH	3,006,602.00	27,721.79	0.13%
JGB #32 30YRS BND	B645J8	2,706,800.00	32,184.63	0.15%
JGB #116 20YRS BND	B4SH6F	1,298,100.00	14,412.96	0.07%
JGB #117 20YRS BND	B682X5	2,243,800.00	24,669.05	0.12%
JGB #307 10YRS BND	B4P5NZ	1,890,713.00	17,391.00	0.08%
JGB #3 40YRS BND	B3R7SY	1,126,400.00	13,622.70	0.06%
JGB #308 10YRS BND	B5VRB5	1,777,298.00	16,454.16	0.08%
JGB #118 20YRS BND	B624MF	1,214,700.00	13,300.45	0.06%

JGB #309 10YRS BND	B40NS1	2,708,733.00	24,933.00	0.12%
JGB #119 20YRS BND	B53RHY	1,045,500.00	11,211.51	0.05%
JGB #120 20YRS BND	B622N1	1,385,600.00	14,545.58	0.07%
JGB #310 10YRS BND	B64TMM	2,961,596.00	27,185.80	0.13%
JGB #33 30YRS BND	B64GKL	3,089,300.00	35,073.03	0.17%
JGB #121 20YRS BND	B3VKGZ	1,538,900.00	16,646.76	0.08%
JGB #311 10YRS BND	B4Y8DQ	2,422,002.00	22,103.43	0.10%
JGB #122 20YRS BND	B5W08Y	1,066,700.00	11,418.59	0.05%
JGB #312 10YRS BND	B4QJNV	6,622,351.00	61,504.26	0.29%
JGB #123 20YRS BND	B533QV	2,281,200.00	25,357.54	0.12%
JGB #124 20YRS BND	B5PVGZ	1,278,800.00	14,065.48	0.07%
JGB #313 10YRS BND	B50VFS	3,788,267.00	35,301.95	0.17%
JGB #34 30YRS BND	B5V3ZN	2,703,200.00	31,767.50	0.15%
JGB #125 20YRS BND	B3R9XJ	1,474,500.00	16,530.05	0.08%
JGB #126 20YRS BND	B52GWL	1,308,600.00	14,364.99	0.07%
JGB #314 10YRS BND	B4VG2X	1,934,918.00	17,910.63	0.08%
JGB #4 40YRS BND	B401R7	1,712,400.00	20,760.90	0.10%
JGB #127 20YRS BND	B4KNYJ	1,045,700.00	11,349.66	0.05%
JGB #315 10YRS BND	B5MF3X	2,904,927.00	27,138.12	0.13%
JGB #128 20YRS BND	B51Y1P	1,981,500.00	21,633.05	0.10%
JGB #316 10YRS BND	B4PGPC	1,909,160.00	17,767.56	0.08%
JGB #129 20YRS BND	B401CD	1,101,100.00	11,888.34	0.06%
JGB #317 10YRS BND	B5BPSN	1,940,841.00	18,063.39	0.09%
JGB #35 30YRS BND	B59NZS	3,135,100.00	35,699.67	0.17%
JGB #130 20YRS BND	B5THST	2,089,400.00	22,498.35	0.11%
JGB #318 10YRS BND	B60CMB	3,758,291.00	34,844.58	0.16%
JGB #131 20YRS BND	B58BSY	1,123,000.00	11,957.14	0.06%
JGB #319 10YRS BND	B7DX80	2,488,974.00	23,287.41	0.11%
JGB #132 20YRS BND	B7FQHN	1,522,400.00	16,291.64	0.08%
JGB #320 10YRS BND	B72WSJ	3,648,291.00	33,988.09	0.16%
JGB #133 20YRS BND	B6WF6H	2,050,700.00	22,200.54	0.10%
JGB #321 10YRS BND	B6VJX8	4,271,903.00	39,795.47	0.19%
JGB #36 30YRS BND	B7JKVV	2,854,300.00	32,526.52	0.15%
JGB #134 20YRS BND	B78K2Z	1,604,700.00	17,334.34	0.08%
JGB #135 20YRS BND	B8CM9V	918,000.00	9,802.54	0.05%
JGB #322 10YRS BND	B84X84	1,623,368.00	15,057.69	0.07%
JGB #5 40YRS BND	B89BJ9	1,742,800.00	20,263.61	0.10%
JGB #136 20YRS BND	B7N1Z0	1,109,377.00	11,708.34	0.06%
JGB #323 10YRS BND	B89TMC	2,128,051.00	19,824.16	0.09%
JGB #137 20YRS BND	B8COMR	969,500.00	10,403.75	0.05%

JGB #324 10YRS BND	B86VRL	3,688,953.00	34,200.79	0.16%
JGB #138 20YRS BND	B8FHZX	1,107,600.00	11,593.39	0.05%
JGB #139 20YRS BND	B8HT2Z	812,600.00	8,609.75	0.04%
JGB #325 10YRS BND	B8F568	6,250,551.00	57,961.58	0.27%
JGB #37 30YRS BND	B8DNJ9	3,693,200.00	41,413.14	0.20%
JGB #140 20YRS BND	B8943D	3,116,900.00	33,349.73	0.16%
JGB #326 10YRS BND	B832LP	2,169,850.00	20,090.77	0.09%
JGB #141 20YRS BND	B96L36	2,466,100.00	26,513.14	0.13%
JGB #327 10YRS BND	B8JBPK	4,561,242.00	42,456.07	0.20%
JGB #142 20YRS BND	B87LSB	1,208,100.00	13,147.70	0.06%
JGB #328 10YRS BND	B8N6DQ	4,555,184.00	41,959.75	0.20%
JGB #38 30YRS BND	B969HP	2,078,900.00	22,916.99	0.11%
JGB #143 20YRS BND	B8VHOP	1,732,900.00	18,344.71	0.09%
JGB #144 20YRS BND	B9612X	1,266,700.00	13,243.06	0.06%
JGB #6 40YRS BND	B9ZKDC	1,041,100.00	11,835.24	0.06%
JGB #329 10YRS BND	BBFSCD	4,230,915.00	39,534.36	0.19%
JGB #39 30YRS BND	BBGTHY	1,677,400.00	18,918.19	0.09%
JGB #145 20YRS BND	BBNNTL	2,284,000.00	24,594.13	0.12%
JGB #330 10YRS BND	BDD8L6	2,041,143.00	19,070.30	0.09%
JGB #40 30YRS BND	BDT2DD	1,359,900.00	15,006.72	0.07%
JGB #146 20YRS BND	BF10LG	2,086,300.00	22,393.47	0.11%
JGB #331 10YRS BND	BGDW20	680,407.00	6,284.32	0.03%
JGB #332 10YRS BND	BH57WF	4,386,014.00	40,620.52	0.19%
JGB #41 30YRS BND	BH7CTV	1,461,700.00	15,888.15	0.08%
JGB #116 5YRS BND	BH81PN	2,627,639.00	23,452.76	0.11%
JGB #147 20YRS BND	BHBFX7	1,841,000.00	19,579.73	0.09%
JGB #333 10YRS BND	BKGRZ2	1,904,867.00	17,637.93	0.08%
JGB #42 30YRS BND	BKKXD0	1,640,600.00	17,775.67	0.08%
JGB #117 5YRS BND	BKTOH1	3,452,545.00	30,823.54	0.15%
JGB #148 20YRS BND	BKWPYL	2,016,000.00	21,089.53	0.10%
JGB #7 40YRS BND	BN33VW	1,063,800.00	11,514.59	0.05%
JGB #334 10YRS BND	BN70H5	1,764,685.00	16,378.53	0.08%
JGB #43 30YRS BND	BN894W	1,220,400.00	13,273.55	0.06%
JGB #118 5YRS BND	BNBRDF	2,061,326.00	18,426.20	0.09%
JGB #149 20YRS BND	BNGK4V	2,256,300.00	23,674.70	0.11%
JGB #119 5YRS BND	BP96HM	1,425,968.00	12,721.40	0.06%
JGB #335 10YRS BND	BQQ3RS	2,281,451.00	21,027.64	0.10%
JGB #44 30YRS BND	BQS836	1,307,800.00	14,178.54	0.07%
JGB #120 5YRS BND	BQV0QM	2,815,255.00	25,173.72	0.12%
JGB #150 20YRS BND	BQWJS3	2,691,200.00	27,759.14	0.13%

JGB #121 5YRS BND	BRL5BN	1,367,338.00	12,202.34	0.06%
JGB #336 10YRS BND	BSTK4C	1,089,345.00	10,061.74	0.05%
JGB #45 30YRS BND	BTF8KP	1,018,300.00	10,629.54	0.05%
JGB #122 5YRS BND	BTJRTZ	2,308,075.00	20,610.17	0.10%
JGB #151 20YRS BND	BTL1DB	2,030,900.00	20,394.22	0.10%
JGB #337 10YRS BND	BV8C9S	1,344,488.00	12,238.98	0.06%
JGB #338 10YRS BND	BW9P8M	1,345,285.00	12,332.06	0.06%
JGB #46 30YRS BND	BVW2F4	1,520,100.00	15,815.86	0.07%
JGB #123 5YRS BND	BWCH7M	2,903,990.00	25,938.87	0.12%
JGB #152 20YRS BND	BVZCMC	2,206,800.00	22,080.52	0.10%
JGB #8 40YRS BND	BX1D7G	1,125,400.00	11,229.04	0.05%
JGB #339 10YRS BND	BYYTQF	2,162,817.00	19,851.03	0.09%
JGB #47 30YRS BND	BYZSCC	804,300.00	8,570.61	0.04%
JGB #153 20YRS BND	BZ0YHL	1,712,200.00	17,429.76	0.08%
JGB #124 5YRS BND	BYND1F	2,190,952.00	19,580.46	0.09%
JGB #340 10YRS BND	BYN39S	1,242,874.00	11,398.80	0.05%
JGB #48 30YRS BND	BZ0G4L	734,200.00	7,470.45	0.04%
JGB #125 5YRS BND	BYNFTB	2,458,955.00	21,978.39	0.10%
JGB #154 20YRS BND	BYRJVT	1,760,400.00	17,608.20	0.08%
JGB #341 10YRS BND	BZ6FG4	1,339,343.00	12,201.55	0.06%
JGB #49 30YRS BND	BD2NRL	941,000.00	9,601.87	0.05%
JGB #126 5YRS BND	BD5J4L	2,080,800.00	18,609.53	0.09%
JGB #155 20YRS BND	BYS7ZF	2,537,100.00	24,626.64	0.12%
JGB #342 10YRS BND	BYPJH8	1,045,050.00	9,354.78	0.04%
JGB #50 30YRS BND	BYZ0CS	1,427,100.00	12,593.18	0.06%
JGB #127 5YRS BND	BZ3SXW	1,332,200.00	11,917.40	0.06%
JGB #156 20YRS BND	BZ6V60	1,648,000.00	14,394.47	0.07%
JGB #9 40YRS BND	BD4DBH	1,923,100.00	13,687.63	0.06%
JGB #343 10YRS BND	BYT3PS	1,255,329.00	11,232.66	0.05%
JGB #51 30YRS BND	BD5VSM	1,298,800.00	9,991.04	0.05%
JGB #128 5YRS BND	BYVFNN	1,490,500.00	13,343.58	0.06%
JGB #157 20YRS BND	BD6RRV	2,256,600.00	18,948.08	0.09%
JGB #344 10YRS BND	BZB1XS	1,915,009.00	17,119.27	0.08%
JGB #52 30YRS BND	BD8CPW	1,889,300.00	15,349.66	0.07%
JGB #129 5YRS BND	BD3010	2,113,300.00	18,920.06	0.09%
JGB #158 20YRS BND	BD2BNS	2,562,700.00	22,671.17	0.11%
JGB #369 2YRS BND	BDB46H	1,400,600.00	12,479.17	0.06%
JGB #370 2YRS BND	BZB2K6	1,170,800.00	10,432.91	0.05%
JGB #371 2YRS BND	BDDN1S	1,543,900.00	13,759.15	0.07%
JGB #345 10YRS BND	BYYNK7	2,428,284.00	21,717.02	0.10%

JGB #53 30YRS BND	BDRYP5	1,407,800.00	11,754.62	0.06%
JGB #130 5YRS BND	BD3HB1	1,398,500.00	12,527.17	0.06%
JGB #159 20YRS BND	BYN2XN	2,904,100.00	26,134.62	0.12%
JGB #372 2YRS BND	BYW2JZ	911,300.00	8,121.92	0.04%
JGB #373 2YRS BND	BZBZYS	1,389,100.00	12,381.72	0.06%
JGB #374 2YRS BND	BYXD4D	1,402,200.00	12,499.67	0.06%
JGB #346 10YRS BND	BF0D3Q	1,110,099.00	9,917.84	0.05%
JGB #54 30YRS BND	BYXD3Z	1,639,600.00	14,397.27	0.07%
JGB #131 5YRS BND	BYX1R2	1,783,100.00	15,972.22	0.08%
JGB #160 20YRS BND	BF30PK	2,602,100.00	23,751.24	0.11%
JGB #375 2YRS BND	BYQJ52	1,426,500.00	12,724.13	0.06%
JGB #376 2YRS BND	BYQMSY	1,182,900.00	10,552.50	0.05%
JGB #10 40YRS BND	BF3792	600,200.00	5,081.83	0.02%
JGB #377 2YRS BND	BZCMXV	1,227,400.00	10,949.75	0.05%
JGB #347 10YRS BND	BF3N1X	1,406,062.00	12,554.93	0.06%
JGB #55 30YRS BND	NA	1,424,100.00	12,514.67	0.06%
JGB #132 5YRS BND	BF0MZN	2,047,700.00	18,355.52	0.09%
JGB #161 20YRS BND	BF5GM0	2,380,900.00	21,317.94	0.10%
JGB #378 2YRS BND	BF2D8D	1,027,700.00	9,169.19	0.04%
JGB #379 2YRS BND	BF2X9P	1,468,200.00	13,100.86	0.06%
JGB #380 2YRS BND	BF0DX7	2,427,304.00	21,659.13	0.10%
JGB #348 10YRS BND	BD3JV6	2,310,806.00	20,610.49	0.10%
JGB #56 30YRS BND	BD5ZML	710,600.00	6,223.91	0.03%
JGB #133 5YRS BND	BDCLKQ	1,922,200.00	17,230.00	0.08%
JGB #162 20YRS BND	BDD20Z	934,700.00	8,342.13	0.04%
MEXICO GOVT BONO	B615Y1	278,476.81	16,190.70	0.08%
MEXICO GOVT BONO	B3ZD2V	312,316.22	17,423.82	0.08%
MEXICO GOVT BONO	B6TC40	131,701.09	7,870.89	0.04%
MEXICO GOVT BONO	B4NDCC	202,956.27	11,303.03	0.05%
MEXICO GOVT BONO	B7V21L	192,534.14	11,520.02	0.05%
MEXICO GOVT BONO	BLT1SS	88,901.10	5,320.60	0.03%
MEXICO GOVT BONO	BSM42M	221,265.42	11,942.01	0.06%
MEXICO GOVT BONO	BYNMJL	154,900.53	7,986.87	0.04%
MEXICO GOVT BONO	BDH3PR	45,405.88	2,797.28	0.01%
MALAYSIA GOVT BND	B60JS3	12,770.00	3,144.93	0.01%
MALAYSIA GOVT BND	B45G1T	13,500.00	3,295.96	0.02%
MALAYSIA GOVT BND	B3TXNR	10,574.33	2,625.51	0.01%
MALAYSIA GOVT BND	B3M8V1	12,750.00	3,007.70	0.01%
MALAYSIA GOVT BND	B743PY	10,500.00	2469.9494	0.01%
MALAYSIA GOVT BND	B7KXN6	5,500.00	1,284.13	0.01%

MALAYSIA GOVT BND	B7CM06	5,500.00	1,286.84	0.01%
MALAYSIA GOVT BND	B8FWT6	11,000.00	2,612.91	0.01%
MALAYSIA GOVT BND	B88KLG	11,420.00	2,671.27	0.01%
MALAYSIA GOVT BND	B9QN4Z	7,500.00	1,703.63	0.01%
MALAYSIA GOVT BND	BBM4RP	5,000.00	1,146.73	0.01%
MALAYSIA GOVT BND	BCQNVK	7,973.06	1,925.90	0.01%
MALAYSIA GOVT BND	BFC9ZJ	6,500.00	1,557.08	0.01%
MALAYSIA GOVT BND	BJ0JR9	11,020.00	2,682.25	0.01%
MALAYSIA GOVT BND	BL2FQ3	11,700.00	2,821.30	0.01%
MALAYSIA GOVT BND	BM6782	11,800.00	2,856.57	0.01%
MALAYSIA GOVT BND	BWC50C	13,672.20	3,244.06	0.02%
MALAYSIA GOVT BND	BW4P1M	11,000.00	2,616.81	0.01%
MALAYSIA GOVT BND	BVYTZD	11,742.13	2,846.74	0.01%
MALAYSIA GOVT BND	BY4K92	7,161.00	1,661.03	0.01%
MALAYSIA GOVT BND	BYNFCW	7177.89697	1717.09846	0.01%
MALAYSIA GOVT BND	BYVK00	10000	2375.47296	0.01%
MALAYSIA GOVT BND	BYZODL	8,000.00	1,871.81	0.01%
MALAYSIA GOVT BND	BD6RZ2	9,000.00	2,153.82	0.01%
MALAYSIA GOVT BND	BD9PN9	7,000.00	1,680.69	0.01%
MALAYSIA GOVT BND	BF1T7C	8,000.00	1,921.70	0.01%
MALAYSIA GOVT BND	BYQBHY	8,000.00	1,919.43	0.01%
MALAYSIA GOVT BND	BYQJOV	5,500.00	1,369.17	0.01%
MALAYSIA GOVT BND	BYQN8M	8,000.00	1,916.90	0.01%
NETHERLANDS GOVT DSL	B64HLC	15,069.62	19,995.69	0.09%
NETHERLANDS GOVT DSL	B4NCHT	15,331.91	28,473.01	0.13%
NETHERLANDS GOVT DSL	B683R6	16,493.98	22,379.14	0.11%
NETHERLANDS GOVT DSL	B6XKZ6	15,252.15	20,290.87	0.10%
NETHERLANDS GOVT DSL	B7S3TD	13,555.90	19,995.46	0.09%
NETHERLANDS GOVT DSL	B9M3PL	15,825.96	20,753.49	0.10%
NETHERLANDS GOVT DSL	BBRGQK	15,321.22	18,729.41	0.09%
NETHERLANDS GOVT DSL	BJZ2W8	13,248.19	21,479.78	0.10%
NETHERLANDS GOVT DSL	BKY7PP	15,315.13	20,506.78	0.10%
NETHERLANDS GOVT DSL	BR17HP	15,318.18	18,508.86	0.09%
NETHERLANDS GOVT DSL	BWH59B	15,220.16	17,979.19	0.08%
NETHERLANDS GOVT DSL	BZ571P	15,113.05	18,003.59	0.09%
NETHERLANDS GOVT DSL	BDC7YB	15,380.11	18,432.38	0.09%
NETHERLANDS GOVT DSL	BDFLC5	12,506.93	15,046.98	0.07%
NORWAY GOVT BND	B3MXHL	80,000.00	11,202.20	0.05%
NORWAY GOVT BND	B8J4D9	59,000.00	7,799.04	0.04%
NORWAY GOVT BND	BKW88J	48,000.00	6,765.02	0.03%

NORWAY GOVT BND	BWC54R	39,000.00	5,070.65	0.02%
NORWAY GOVT BND	BYQ718	40,000.00	5,076.41	0.02%
NORWAY GOVT BND	BD8BY5	27,000.00	3,471.87	0.02%
POLAND GOVT BND	B3P3LS	18,026.41	5,633.60	0.03%
POLAND GOVT BND	B55CYV	16,181.63	5,235.40	0.02%
POLAND GOVT BND	B9275T	26,786.86	8,059.40	0.04%
POLAND GOVT BND	BMP36B	22,876.47	6,484.89	0.03%
POLAND GOVT BND	BN89SK	28,428.53	7,883.22	0.04%
POLAND GOVT BND	BVRZHW	29,681.37	8,089.12	0.04%
POLAND GOVT BND	BYZTNT	36,934.79	9,567.18	0.05%
POLAND GOVT BND	BYNH22	26,798.29	7,329.61	0.03%
POLAND GOVT BND	BYN5P8	28,267.84	7,634.90	0.04%
POLAND GOVT BND	BD2MS9	30,195.16	8,113.30	0.04%
POLAND GOVT BND	BDHDCF	25,150.20	6,432.50	0.03%
POLAND GOVT BND	BD2Z8F	28,711.51	7,816.51	0.04%
POLAND GOVT BND	BD6HCB	20,295.20	5,425.31	0.03%
SWEDEN GOVT BND	B4L533	101,130.50	14,559.58	0.07%
SWEDEN GOVT BND	B7XXQS	84,477.00	11,258.63	0.05%
SWEDEN GOVT BND	BJMYYC	59,376.00	8,438.01	0.04%
SWEDEN GOVT BND	BZ2J6S	60,391.00	7,671.10	0.04%
SWEDEN GOVT BND	BDG6ZM	40,365.00	4,871.36	0.02%
SINGAPORE GOVT BND	B61HV1	3,900.00	3,049.76	0.01%
SINGAPORE GOVT BND	B4P1BR	7,500.00	5,693.91	0.03%
SINGAPORE GOVT BND	B6WTXD	4,600.00	3,551.16	0.02%
SINGAPORE GOVT BND	B9079T	5,800.00	4,515.03	0.02%
SINGAPORE GOVT BND	B9L2YV	4,000.00	3,318.54	0.02%
SINGAPORE GOVT BND	BNMPKS	1,900.00	1,494.60	0.01%
SINGAPORE GOVT BND	BR4DWQ	4,500.00	3,328.91	0.02%
SINGAPORE GOVT BND	BYMSKM	3,600.00	2,736.29	0.01%
SINGAPORE GOVT BND	BYXZZK	2,600.00	1,952.65	0.01%
SINGAPORE GOVT BND	BDCFY6	3,700.00	2,866.39	0.01%
SINGAPORE GOVT BND	BD1RKM	2,300.00	1,713.59	0.01%
SINGAPORE GOVT BND	BD1RC1	2,100.00	1,509.75	0.01%
SINGAPORE GOVT BND	BZ0BDK	2,000.00	1,454.50	0.01%
SINGAPORE GOVT BND	BF3GPP	2,400.00	1,775.24	0.01%
SOUTH AFRICA REPUBLIC OF GOVT BND	B596VC	104,550.04	6,502.41	0.03%
SOUTH AFRICA REPUBLIC OF GOVT BND	B5VV9G	88,578.86	4,693.66	0.02%
SOUTH AFRICA REPUBLIC OF GOVT BND	B7V105	72,706.35	5,388.30	0.03%
SOUTH AFRICA REPUBLIC OF GOVT BND	B8S1C4	150,635.84	10,189.16	0.05%

SOUTH AFRICA REPUBLIC OF GOVT BND	BFDTGL	101,838.64	6,908.44	0.03%
SOUTH AFRICA REPUBLIC OF GOVT BND	BH6XNR	103,554.11	7,154.37	0.03%
SOUTH AFRICA REPUBLIC OF GOVT BND	BP4JP7	82,314.77	5,580.92	0.03%
SOUTH AFRICA REPUBLIC OF GOVT BND	BPXR8D	92,226.11	6,281.40	0.03%
SOUTH AFRICA REPUBLIC OF GOVT BND	BYY9RZ	59,264.21	4,185.82	0.02%
SOUTH AFRICA REPUBLIC OF GOVT BND	BYM2NZ	48,545.41	3,404.51	0.02%
				100.00%

The summary above was correct at the time of the compilation of this supplement. For updated information please visit the website of Ashburton Manco (www.ashburtoninvestments.co.za). The ground rules for the construction of the Index, including various corporate actions (where applicable), is set out in a summary document, a copy of which is publicly available at (www.yieldbook.com/m/indices/). The summary document:

- sets out details on the process involved when there are changes to the Index, including but not limited to any corporate action (where applicable) and how those changes are communicated to investors;
- requires that any changes pertaining to the Index be published publicly on the Index licensor's website and in a timely manner, via a notice, for Index users to be able to replicate the Index as far as practically possible, as must corrected Index data in the event of erroneous distribution of data; and
- sets out a clear policy in relation to the publication and correction of errors.

Any material changes to the index methodology will be communicated to the JSE, as well as to the market through the Stock Exchange News Service ("SENS")

3. Disclaimers and Notices

- 3.1 The Ashburton World Government Bond Exchange Traded Fund (the "Fund") is not in any way sponsored, endorsed, sold or promoted by FTSE Fixed Income LLC ("FTSE FI") or the London Stock Exchange Group of companies ("LSEG Companies") (together the "Licensor Parties") and none of the Licensor Parties make any claim, prediction, warranty or representation whatsoever, expressly or impliedly, either as to (i) the results to be obtained from the use of the Index (ii) the figure at which the Index is said to stand at any particular time on any particular day or otherwise, or (iii) the suitability of the Index for the purpose to which it is being put in connection with the Fund.
- 3.2 None of the Licensor Parties have provided or will provide any financial or investment advice or recommendation in relation to the Index to the Issuer or to its clients. The Index is calculated by FTSE FI or its agent. None of the Licensor Parties shall be (a) liable (whether in negligence or otherwise) to any person for any error in the Index or (b) under any obligation to advise any person of any error therein.
- 3.3 All rights in the Index vest in FTSE FI and/or its licensors. "FTSE®" is a trade mark of LSEG Companies and is used by FTSE FI under licence.



ANNEXURE 7

PRELIMINARY EXPENSES

Expense	Rand
JSE documentation inspection fee	R72 526.32
Annual listing fee payable in February	basis point (0.01%) of the value of the ETF up to a maximum of R401 215 (incl VAT)



ANNEXURE 8

BUSINESS ADDRESSES OF THE DIRECTORS

The business addresses of the directors of the Manager whose names are also set out in the "Corporate Information" section are set out below:

Full name	Business address
Geoffrey Llewellyn Carter*	4 Merchant Place Cnr Fredman Drive & Rivonia Road Sandton 2196
Marilyn Ramplin*	Private Bag X11 Postnet Suit 12 Birnam 2015
Boshoff Grobler	4 Merchant Place Cnr Fredman Drive & Rivonia Road Sandton 2196
Stuart Yates*	15 Bedford Avenue Craighall Park 2196
Vladimir Nedeljkovic	4 Merchant Place Cnr Fredman Drive & Rivonia Road Sandton 2196

* Non-executive

